

Product datasheet for TA356713

Cryab Rabbit Polyclonal Antibody

Product data:

Product Type:	Primary Antibodies
Applications:	WB
Reactivity:	Rat, Mouse
Host:	Rabbit
Clonality:	Polyclonal
Specificity:	Expected reactivity: Cow, Dog, Guinea Pig, Horse, Human, Mouse, Pig, Rabbit, Rat, Sheep Homology: Cow: 100%; Dog: 100%; Guinea Pig: 86%; Horse: 100%; Human: 100%; Mouse: 100%; Pig: 100%; Rabbit: 100%; Rat: 100%; Sheep: 100%
Formulation:	Liquid. Purified antibody supplied in 1x PBS buffer with 0.09% (w/v) sodium azide and 2% sucrose. <i>Note that this product is shipped as lyophilized powder to China customers.</i>
Concentration:	lot specific
Purification:	Affinity Purified
Conjugation:	Unconjugated
Storage:	For short term use, store at 2-8°C up to 1 week. For long term storage, store at -20°C in small aliquots to prevent freeze-thaw cycles.
Stability:	Shelf life: one year from despatch.
Predicted Protein Size:	19kDa
Gene Name:	crystallin, alpha B
Database Link:	NP_037067 Entrez Gene 12955 Mouse Entrez Gene 25420 Rat P23928
Background:	Cryab is a structural constituent of the lens that may have non-ocular functions as well; it may play a role in response to cardiac stress during ischemia.
Synonyms:	Alpha(B)-crystallin; CRYA2; CTPP2; HspB5

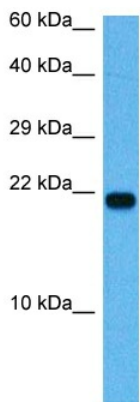


[View online »](#)

Product images:



WB Suggested Anti-Cryab Antibody
Titration: 1.0 ug/ml
Positive Control: Rat Brain



Host: Rabbit
Target Name: Cryab
Sample Type: Mouse Small Intestine Lysate
Antibody Dilution: 1.0µg/ml

Host: Mouse
Target Name: CRYAB
Sample Tissue: Mouse Small Intestine
Antibody Dilution: 1 ug/ml