

## Product datasheet for **TA356709**

### HSPB2 Rabbit Polyclonal Antibody

#### Product data:

Product Type:	Primary Antibodies
Applications:	WB
Reactivity:	Human
Host:	Rabbit
Clonality:	Polyclonal
Immunogen:	The immunogen is a synthetic peptide directed towards the N-terminal region of Human HSPB2
Specificity:	<b>Expected reactivity:</b> Cow, Dog, Guinea Pig, Horse, Human, Mouse, Rabbit, Rat, Zebrafish <b>Homology:</b> Cow: 100%; Dog: 100%; Guinea Pig: 100%; Horse: 100%; Human: 100%; Mouse: 100%; Rabbit: 100%; Rat: 100%; Zebrafish: 83%
Formulation:	Liquid. Purified antibody supplied in 1x PBS buffer with 0.09% (w/v) sodium azide and 2% sucrose. <i>Note that this product is shipped as lyophilized powder to China customers.</i>
Concentration:	lot specific
Purification:	Affinity purified
Conjugation:	Unconjugated
Storage:	For short term use, store at 2-8°C up to 1 week. For long term storage, store at -20°C in small aliquots to prevent freeze-thaw cycles.
Stability:	Shelf life: one year from despatch.
Predicted Protein Size:	20kDa
Gene Name:	heat shock protein family B (small) member 2
Database Link:	<a href="#">NP_001532</a> <a href="#">Entrez Gene 3316 Human</a> <a href="#">Q16082</a>



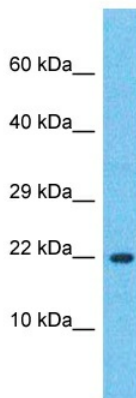
[View online »](#)

**Background:**

The protein encoded by this gene belongs to the superfamily of small heat-shock proteins containing a conservative alpha-crystallin domain at the C-terminal part of the molecule. The protein is expressed preferentially in the heart and skeletal muscle. This protein regulates Myotonic Dystrophy Protein Kinase, which plays an important role in maintenance of muscle structure and function.

**Synonyms:**

HSP27; LOH11CR1K; MGC133245; MKBP

**Product images:**

Host: Rabbit  
Target Name: HSPB2  
Sample Tissue: Hela Cell Lysate  
Antibody Dilution: 1.0µg/ml

Host: Rabbit  
Target Name: HSPB2  
Sample Type: Hela Whole Cell lysates  
Antibody Dilution: 1.0ug/ml