

## Product datasheet for **TA356705**

### OLFML3 Rabbit Polyclonal Antibody

#### Product data:

Product Type:	Primary Antibodies
Applications:	WB
Reactivity:	Human
Host:	Rabbit
Clonality:	Polyclonal
Immunogen:	The immunogen is a synthetic peptide directed towards the N-terminal region of Human OLFML3
Specificity:	<b>Expected reactivity:</b> Cow, Dog, Guinea Pig, Horse, Human, Mouse, Pig, Rabbit, Rat <b>Homology:</b> Cow: 100%; Dog: 100%; Guinea Pig: 93%; Horse: 100%; Human: 100%; Mouse: 93%; Pig: 100%; Rabbit: 100%; Rat: 100%
Formulation:	Liquid. Purified antibody supplied in 1x PBS buffer with 0.09% (w/v) sodium azide and 2% sucrose. <i>Note that this product is shipped as lyophilized powder to China customers.</i>
Concentration:	lot specific
Purification:	Affinity Purified
Conjugation:	Unconjugated
Storage:	For short term use, store at 2-8°C up to 1 week. For long term storage, store at -20°C in small aliquots to prevent freeze-thaw cycles.
Stability:	Shelf life: one year from despatch.
Predicted Protein Size:	44kDa
Gene Name:	olfactomedin like 3
Database Link:	<a href="#">NP_064575</a> <a href="#">Entrez Gene 56944 Human</a> <a href="#">Q9NRN5</a>



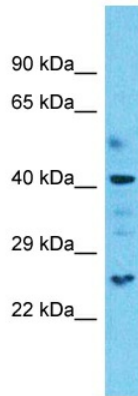
[View online »](#)

**Background:**

OLFML3 is a secreted scaffold protein that plays an essential role in dorsoventral patterning during early development. It stabilizes axial formation by restricting chordin (CHRD) activity on the dorsal side. Acts by facilitating the association between the tolloid proteases and their substrate chordin (CHRD), leading to enhance chordin (CHRD) degradation. It may have matrix-related function involved in placental and embryonic development, or play a similar role in other physiological processes.

**Synonyms:**

HNOEL-iso; hOLF44; OLF44

**Product images:**

Host: Rabbit  
Target Name: OLFML3  
Sample Tissue: Uterus Tumor Lysate  
Antibody Dilution: 1.0µg/ml

Host: Rabbit  
Target Name: OLFML3  
Sample Type: Uterus Tumor lysates  
Antibody Dilution: 1.0ug/ml