

Product datasheet for **TA356702**

SPATA20 Rabbit Polyclonal Antibody

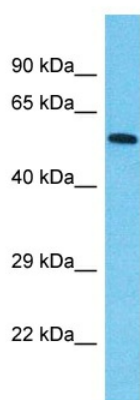
Product data:

Product Type:	Primary Antibodies
Applications:	WB
Reactivity:	Human
Host:	Rabbit
Clonality:	Polyclonal
Immunogen:	The immunogen is a synthetic peptide directed towards the C-terminal region of Human SPATA20
Specificity:	Expected reactivity: Cow, Dog, Guinea Pig, Horse, Human, Mouse, Rabbit, Rat Homology: Cow: 100%; Dog: 100%; Guinea Pig: 100%; Horse: 100%; Human: 100%; Mouse: 100%; Rabbit: 100%; Rat: 100%
Formulation:	Liquid. Purified antibody supplied in 1x PBS buffer with 0.09% (w/v) sodium azide and 2% sucrose.
Concentration:	lot specific
Purification:	Affinity Purified
Conjugation:	Unconjugated
Storage:	For short term use, store at 2-8°C up to 1 week. For long term storage, store at -20°C in small aliquots to prevent freeze-thaw cycles.
Stability:	Shelf life: one year from despatch.
Predicted Protein Size:	57kDa
Gene Name:	spermatogenesis associated 20
Database Link:	Entrez Gene 64847 Human Q8TB22-4
Background:	SPATA20 may play a role in fertility regulation.
Synonyms:	DKFZp686H1839; FLJ21347; FLJ21969; MGC111032; SSP411; Tisp78



[View online »](#)

Product images:



Host: Rabbit
Target Name: SPATA20
Sample Tissue: Colorectal Tumor Lysate
Antibody Dilution: 1.0µg/ml

Host: Rabbit
Target Name: SPATA20
Sample Type: Colorectal Tumor lysates
Antibody Dilution: 1.0ug/ml