

## Product datasheet for **TA356700**

### PRRC2B Rabbit Polyclonal Antibody

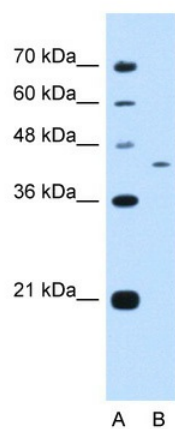
#### Product data:

Product Type:	Primary Antibodies
Applications:	WB
Reactivity:	Human
Host:	Rabbit
Clonality:	Polyclonal
Immunogen:	The immunogen is a synthetic peptide directed towards the N terminal region of human KIAA0515
Specificity:	<b>Expected reactivity:</b> Cow, Dog, Guinea Pig, Horse, Human, Mouse, Rabbit, Rat <b>Homology:</b> Cow: 100%; Dog: 86%; Guinea Pig: 100%; Horse: 100%; Human: 100%; Mouse: 100%; Rabbit: 93%; Rat: 93%
Formulation:	Liquid. Purified antibody supplied in 1x PBS buffer with 0.09% (w/v) sodium azide and 2% sucrose.
Concentration:	lot specific
Purification:	Affinity Purified
Conjugation:	Unconjugated
Storage:	For short term use, store at 2-8°C up to 1 week. For long term storage, store at -20°C in small aliquots to prevent freeze-thaw cycles.
Stability:	Shelf life: one year from despatch.
Predicted Protein Size:	48kDa
Gene Name:	proline rich coiled-coil 2B
Database Link:	<a href="#">EAW87968</a> <a href="#">Entrez Gene 84726 Human</a> <a href="#">Q5JSZ5</a>
Background:	The function remains unknown.
Synonyms:	5830434P21Rik; AI173903; Bat2l; Bat2l1; D430039P21; mKIAA0515



[View online »](#)

## Product images:



WB Suggested Anti-KIAA0515 Antibody Titration:  
0.2-1 ug/ml  
Positive Control: HepG2 cell lysate PRRC2B is supported by BioGPS gene expression data to be expressed in HepG2