

Product datasheet for **TA356694**

pb Rabbit Polyclonal Antibody

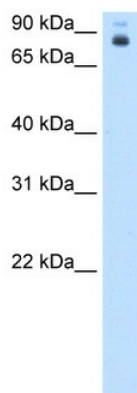
Product data:

Product Type:	Primary Antibodies
Applications:	WB
Reactivity:	Drosophila
Host:	Rabbit
Clonality:	Polyclonal
Specificity:	Homology: Fruit fly:100%;
Formulation:	Liquid. Purified antibody supplied in 1x PBS buffer with 0.09% (w/v) sodium azide and 2% sucrose. <i>Note that this product is shipped as lyophilized powder to China customers.</i>
Concentration:	lot specific
Purification:	Affinity Purified
Conjugation:	Unconjugated
Storage:	For short term use, store at 2-8°C up to 1 week. For long term storage, store at -20°C in small aliquots to prevent freeze-thaw cycles.
Stability:	Shelf life: one year from despatch.
Predicted Protein Size:	83kDa
Gene Name:	proboscipedia
Database Link:	NP_996163 P31264
Background:	Pb is a sequence-specific transcription factor which is part of a developmental regulatory system that provides cells with specific positional identities on the anterior-posterior axis. It controls development of mouthparts, and labial and maxillary palps.



[View online »](#)

Product images:



WB Suggested Anti-pb Antibody Titration: 0.2-1 ug/ml
Positive Control: Drosophila