

Product datasheet for **TA356691**

exd Rabbit Polyclonal Antibody

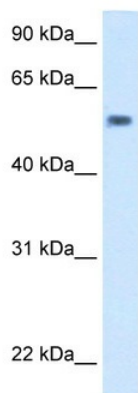
Product data:

Product Type:	Primary Antibodies
Applications:	WB
Reactivity:	Drosophila
Host:	Rabbit
Clonality:	Polyclonal
Immunogen:	The immunogen is a synthetic peptide corresponding to a region of Fruit fly
Specificity:	Expected reactivity: Cow, Dog, Guinea Pig, Horse, Human, Mouse, Rabbit, Rat, Zebrafish Homology: Cow: 93%; Dog: 93%; Guinea Pig: 93%; Horse: 93%; Human: 100%; Mouse: 93%; Rabbit: 93%; Rat: 100%; Zebrafish: 93%
Formulation:	Liquid. Purified antibody supplied in 1x PBS buffer with 0.09% (w/v) sodium azide and 2% sucrose. <i>Note that this product is shipped as lyophilized powder to China customers.</i>
Concentration:	lot specific
Purification:	Protein A purified
Conjugation:	Unconjugated
Storage:	For short term use, store at 2-8°C up to 1 week. For long term storage, store at -20°C in small aliquots to prevent freeze-thaw cycles.
Stability:	Shelf life: one year from despatch.
Predicted Protein Size:	42kDa
Gene Name:	extradenticle
Database Link:	NP_727924 P40427
Background:	As a transcription factor, exd acts with the selector homeodomain proteins altering the regulation of downstream target genes such as wingless, teashirt and decapentaplegic. Thus exd affects segmental identity.

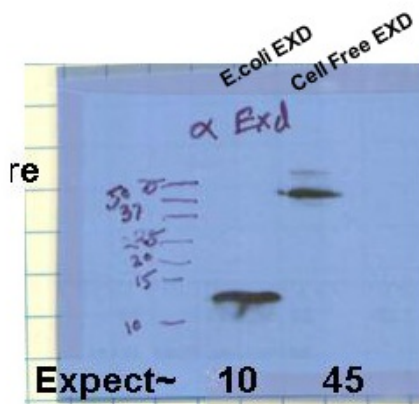


[View online »](#)

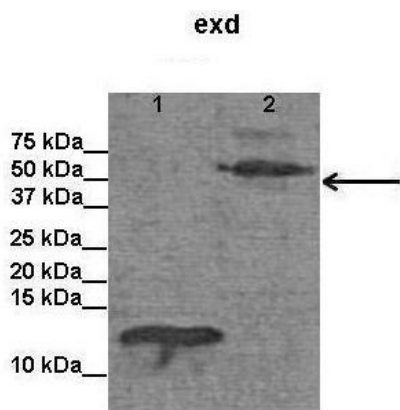
Product images:



WB Suggested Anti-exd Antibody Titration:
5.0ug/ml
Positive Control: Drosophila



exd antibody - C-terminal region (TA356691)
validated by WB using Drosophila EXD constructs
at 1:1000.



Lanes:

Lane1: E. coli purified Exd (no tag)

Lane2: Cell free expressed Exd (His tag)

Primary Antibody Dilution:

1:1000

Secondary Antibody:

Anti-rabbit HRP

Secondary Antibody Dilution:

1:5000

Gene Name:

exd

Submitted by:

Kimberly Kaufman, Univeristy of Wisconsin-Madison

See Immunoblot 3 Data and Customer Feedback for more information