

Product datasheet for **TA356689**

cad Rabbit Polyclonal Antibody

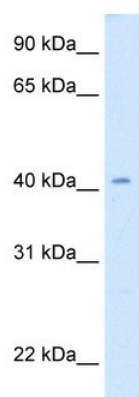
Product data:

Product Type:	Primary Antibodies
Applications:	WB
Reactivity:	Drosophila
Host:	Rabbit
Clonality:	Polyclonal
Immunogen:	The immunogen is a synthetic peptide corresponding to a region of Fruit fly
Specificity:	Expected reactivity: Cow, Dog, Guinea Pig, Horse, Human, Mouse, Rabbit, Rat, Zebrafish Homology: Cow: 100%; Dog: 100%; Guinea Pig: 100%; Horse: 100%; Human: 100%; Mouse: 100%; Rabbit: 100%; Rat: 100%; Zebrafish: 100%
Formulation:	Liquid. Purified antibody supplied in 1x PBS buffer with 0.09% (w/v) sodium azide and 2% sucrose.
Concentration:	lot specific
Purification:	Affinity Purified
Conjugation:	Unconjugated
Storage:	For short term use, store at 2-8°C up to 1 week. For long term storage, store at -20°C in small aliquots to prevent freeze-thaw cycles.
Stability:	Shelf life: one year from despatch.
Predicted Protein Size:	46kDa
Gene Name:	caudal
Database Link:	NP_599128 P09085
Background:	Cad regulates embryonic abdominal segment formation by zygotically activating expression of knirps (kni) and giant (gt). It plays a role in the establishment of the hindgut and in the invagination of the hindgut primordium during gastrulation. These effects on the gut are achieved by acting combinatorially at the posterior of the embryo to activate transcription of different targets, including folded gastrulation (fog), fork head (fkh) and wingless (wg).



[View online »](#)

Product images:



WB Suggested Anti-cad Antibody Titration: 0.2-1
ug/ml
Positive Control: Drosophila