

Product datasheet for **TA356688**

eve Rabbit Polyclonal Antibody

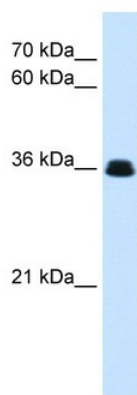
Product data:

Product Type:	Primary Antibodies
Applications:	WB
Reactivity:	Drosophila
Host:	Rabbit
Clonality:	Polyclonal
Immunogen:	The immunogen is a synthetic peptide corresponding to a region of Fruit fly
Specificity:	Homology: Fruit fly: 100%
Formulation:	Liquid. Purified antibody supplied in 1x PBS buffer with 0.09% (w/v) sodium azide and 2% sucrose. <i>Note that this product is shipped as lyophilized powder to China customers.</i>
Concentration:	lot specific
Purification:	Affinity Purified
Conjugation:	Unconjugated
Storage:	For short term use, store at 2-8°C up to 1 week. For long term storage, store at -20°C in small aliquots to prevent freeze-thaw cycles.
Stability:	Shelf life: one year from despatch.
Predicted Protein Size:	40kDa
Gene Name:	even skipped
Database Link:	NP_523670 P06602
Background:	Eve may play a role in determining neuronal identity. It may be directly involved in specifying identity of individual neurons. It is a pair-rule protein required for segmentation; involved in transforming the broad, spatial, aperiodic expression patterns of the gap genes into a system of precise periodic expression patterns of the pair-rule and segmentary polarity genes.



[View online »](#)

Product images:



WB Suggested Anti-eve Antibody Titration: 0.2-1 ug/ml
Positive Control: Drosophila