

Product datasheet for **TA356678**

ZNF50 (ZSCAN22) Rabbit Polyclonal Antibody

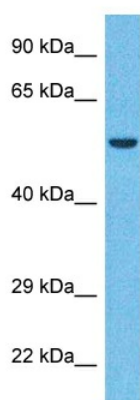
Product data:

Product Type:	Primary Antibodies
Applications:	WB
Reactivity:	Human
Host:	Rabbit
Clonality:	Polyclonal
Immunogen:	The immunogen is a synthetic peptide directed towards the N-terminal region of Human ZSC22
Specificity:	Expected reactivity: Dog, Human Homology: Dog: 87%; Human: 100%
Formulation:	Liquid. Purified antibody supplied in 1x PBS buffer with 0.09% (w/v) sodium azide and 2% sucrose.
Concentration:	lot specific
Purification:	Affinity purified
Conjugation:	Unconjugated
Storage:	For short term use, store at 2-8°C up to 1 week. For long term storage, store at -20°C in small aliquots to prevent freeze-thaw cycles.
Stability:	Shelf life: one year from despatch.
Predicted Protein Size:	54kDa
Gene Name:	zinc finger and SCAN domain containing 22
Database Link:	XP_006723255 Entrez Gene 342945 Human P10073
Synonyms:	HKR2; MGC126679; MGC138482; ZNF50



[View online »](#)

Product images:



Host: Rabbit
Target Name: ZSC22
Sample Tissue: Fetal Liver Lysate
Antibody Dilution: 1.0 μ g/ml

Host: Rabbit
Target Name: ZSC22
Sample Type: Fetal Liver lysates
Antibody Dilution: 1.0ug/ml