

## Product datasheet for **TA356674**

### E2F8 Rabbit Polyclonal Antibody

#### Product data:

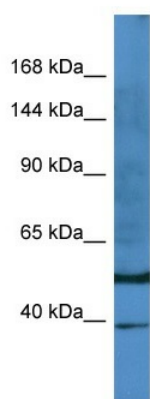
Product Type:	Primary Antibodies
Applications:	WB
Reactivity:	Human
Host:	Rabbit
Clonality:	Polyclonal
Immunogen:	The immunogen is a synthetic peptide directed towards the N-terminal region of human E2F8
Specificity:	<b>Expected reactivity:</b> Cow, Dog, Guinea Pig, Horse, Human, Mouse, Rabbit, Rat <b>Homology:</b> Cow: 93%; Dog: 93%; Guinea Pig: 93%; Horse: 79%; Human: 100%; Mouse: 93%; Rabbit: 93%; Rat: 93%
Formulation:	Liquid. Purified antibody supplied in 1x PBS buffer with 0.09% (w/v) sodium azide and 2% sucrose. <i>Note that this product is shipped as lyophilized powder to China customers.</i>
Concentration:	lot specific
Purification:	Affinity Purified
Conjugation:	Unconjugated
Storage:	For short term use, store at 2-8°C up to 1 week. For long term storage, store at -20°C in small aliquots to prevent freeze-thaw cycles.
Stability:	Shelf life: one year from despatch.
Predicted Protein Size:	39kDa
Gene Name:	E2F transcription factor 8
Database Link:	<a href="#">NP_001243300.1</a> <a href="#">Entrez Gene 79733 Human</a> <a href="#">A0AVK6</a>
Background:	This gene encodes a member of a family of transcription factors which regulate the expression of genes required for progression through the cell cycle. The encoded protein regulates progression from G1 to S phase by ensuring the nucleus divides at the proper time. Multiple alternatively spliced variants, encoding the same protein, have been identified.
Synonyms:	E2F-8; FLJ23311



[View online »](#)

Protein Families: Druggable Genome

### Product images:



Host: Rabbit  
Target Name: E2F8  
Sample Type: PANC1 Whole Cell lysates  
Antibody Dilution: 1.0ug/ml