

## Product datasheet for **TA356673**

### PMFBP1 Rabbit Polyclonal Antibody

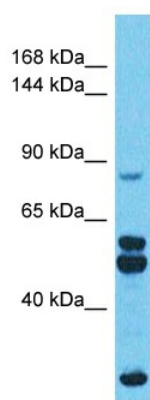
#### Product data:

Product Type:	Primary Antibodies
Applications:	WB
Reactivity:	Human
Host:	Rabbit
Clonality:	Polyclonal
Immunogen:	The immunogen is a synthetic peptide directed towards the middle region of Human PMFBP1
Specificity:	<b>Expected reactivity:</b> Cow, Dog, Horse, Human, Mouse, Pig, Rabbit, Rat <b>Homology:</b> Cow: 100%; Dog: 100%; Horse: 100%; Human: 100%; Mouse: 100%; Pig: 100%; Rabbit: 100%; Rat: 100%
Formulation:	Liquid. Purified antibody supplied in 1x PBS buffer with 0.09% (w/v) sodium azide and 2% sucrose. <i>Note that this product is shipped as lyophilized powder to China customers.</i>
Concentration:	lot specific
Purification:	Affinity Purified
Conjugation:	Unconjugated
Storage:	For short term use, store at 2-8°C up to 1 week. For long term storage, store at -20°C in small aliquots to prevent freeze-thaw cycles.
Stability:	Shelf life: one year from despatch.
Predicted Protein Size:	87kDa
Gene Name:	polyamine modulated factor 1 binding protein 1
Database Link:	<a href="#">Entrez Gene 83449 Human Q8TBY8-3</a>
Background:	PMFBP1 may play a role in sperm morphology especially the sperm tail and consequently affect fertility and may also be involved in the general organization of cellular cytoskeleton.
Synonyms:	DKFZp434G131; FLJ40146



[View online »](#)

## Product images:



Host: Rabbit  
Target Name: PMFBP1  
Sample Tissue: Uterus Tumor Lysate  
Antibody Dilution: 1.0 $\mu$ g/ml

Host: Rabbit  
Target Name: PMFBP1  
Sample Type: Uterus Tumor lysates  
Antibody Dilution: 1.0ug/ml