

Product datasheet for **TA356668**

MAML3 Rabbit Polyclonal Antibody

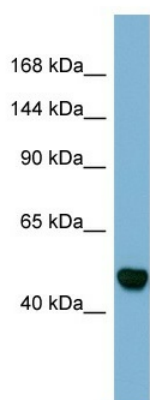
Product data:

Product Type:	Primary Antibodies
Applications:	WB
Reactivity:	Human
Host:	Rabbit
Clonality:	Polyclonal
Immunogen:	The immunogen is a synthetic peptide directed towards the C-terminal region of human MAML3
Specificity:	Expected reactivity: Cow, Dog, Guinea Pig, Horse, Human, Mouse, Rabbit, Rat Homology: Cow: 100%; Dog: 93%; Guinea Pig: 100%; Horse: 100%; Human: 100%; Mouse: 100%; Rabbit: 86%; Rat: 100%
Formulation:	Liquid. Purified antibody supplied in 1x PBS buffer with 0.09% (w/v) sodium azide and 2% sucrose. <i>Note that this product is shipped as lyophilized powder to China customers.</i>
Concentration:	lot specific
Purification:	Affinity Purified
Conjugation:	Unconjugated
Storage:	For short term use, store at 2-8°C up to 1 week. For long term storage, store at -20°C in small aliquots to prevent freeze-thaw cycles.
Stability:	Shelf life: one year from despatch.
Predicted Protein Size:	48kDa
Gene Name:	mastermind like transcriptional coactivator 3
Database Link:	NP_061187.2 Entrez Gene 55534 Human Q96JK9
Synonyms:	CAGH3; ERDA3; GDN; KIAA1816; MAM-2; Mam-3; MAM2; TNRC3
Protein Families:	Transcription Factors
Protein Pathways:	Notch signaling pathway



[View online »](#)

Product images:



Host: Rabbit
Target Name: MAML3
Sample Type: Fetal Stomach lysates
Antibody Dilution: 1.0ug/ml