

Product datasheet for **TA356663**

zinc finger protein 138 (ZNF138) Rabbit Polyclonal Antibody

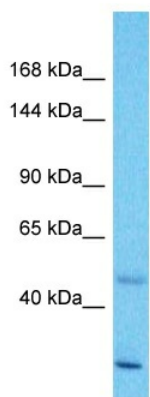
Product data:

Product Type:	Primary Antibodies
Applications:	WB
Reactivity:	Human
Host:	Rabbit
Clonality:	Polyclonal
Immunogen:	The immunogen is a synthetic peptide directed towards the middle region of Human ZNF138
Specificity:	Expected reactivity: Cow, Human, Mouse, Rat, Zebrafish Homology: Cow: 83%; Human: 100%; Mouse: 85%; Rat: 85%; Zebrafish: 79%
Formulation:	Liquid. Purified antibody supplied in 1x PBS buffer with 0.09% (w/v) sodium azide and 2% sucrose. <i>Note that this product is shipped as lyophilized powder to China customers.</i>
Concentration:	lot specific
Purification:	Affinity Purified
Conjugation:	Unconjugated
Storage:	For short term use, store at 2-8°C up to 1 week. For long term storage, store at -20°C in small aliquots to prevent freeze-thaw cycles.
Stability:	Shelf life: one year from despatch.
Predicted Protein Size:	32kDa
Gene Name:	zinc finger protein 138
Database Link:	Entrez Gene 7697 Human P52744-2
Background:	ZNF138 belongs to the krueppel C2H2-type zinc-finger protein family and may be involved in transcriptional regulation.
Synonyms:	pHZ-32



[View online »](#)

Product images:



Host: Rabbit
Target Name: ZNF138
Sample Tissue: Esophagus Tumor Lysate
Antibody Dilution: 1.0 μ g/ml

Host: Rabbit
Target Name: ZNF138
Sample Type: Esophagus Tumor lysates
Antibody Dilution: 1.0ug/ml