

Product datasheet for **TA356653**

St6galnac1 Rabbit Polyclonal Antibody

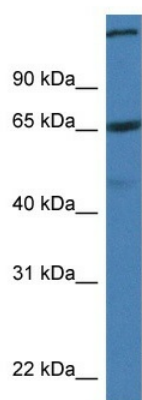
Product data:

Product Type:	Primary Antibodies
Applications:	WB
Reactivity:	Mouse
Host:	Rabbit
Clonality:	Polyclonal
Specificity:	Expected reactivity: Cow, Dog, Guinea Pig, Horse, Human, Mouse, Rabbit, Rat Homology: Cow: 100%; Dog: 100%; Guinea Pig: 100%; Horse: 100%; Human: 100%; Mouse: 93%; Rabbit: 100%; Rat: 100%
Formulation:	Liquid. Purified antibody supplied in 1x PBS buffer with 0.09% (w/v) sodium azide and 2% sucrose. <i>Note that this product is shipped as lyophilized powder to China customers.</i>
Concentration:	lot specific
Purification:	Affinity Purified
Conjugation:	Unconjugated
Storage:	For short term use, store at 2-8°C up to 1 week. For long term storage, store at -20°C in small aliquots to prevent freeze-thaw cycles.
Stability:	Shelf life: one year from despatch.
Predicted Protein Size:	61kDa
Gene Name:	ST6 (alpha-N-acetyl-neuraminyl-2,3-beta-galactosyl-1,3)-N-acetylgalactosaminide alpha-2,6-sialyltransferase 1
Database Link:	NP_035501 Entrez Gene 20445 Mouse Q9QZ39
Background:	St6galnac1 transfers CMP-NeuAc with an alpha-2,6-linkage to the GalNAc residues of GalNAc-O-Ser/Thr, Gal-beta-1,3-GalNAc-O-Ser/Thr and NeuAc-alpha-2,3-Gal-beta-1,3-GalNAc-O-Ser/Thr are substrates. Higher activity towards GalNAc-O-Ser/Thr.
Synonyms:	HSY11339; SIAT7A; ST6GalNAcI; STYI



[View online »](#)

Product images:



WB Suggested Anti-St6galnac1 Antibody
Titration: 1.0 ug/ml
Positive Control: Mouse Pancreas