

## Product datasheet for **TA356645**

### **C1orf159 Rabbit Polyclonal Antibody**

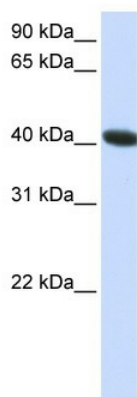
#### **Product data:**

Product Type:	Primary Antibodies
Applications:	WB
Reactivity:	Human
Host:	Rabbit
Clonality:	Polyclonal
Immunogen:	The immunogen is a synthetic peptide directed towards the C terminal region of human C1orf159
Specificity:	<b>Expected reactivity:</b> Human <b>Homology:</b> Human: 100%
Formulation:	Liquid. Purified antibody supplied in 1x PBS buffer with 0.09% (w/v) sodium azide and 2% sucrose.
Concentration:	lot specific
Purification:	Affinity Purified
Conjugation:	Unconjugated
Storage:	For short term use, store at 2-8°C up to 1 week. For long term storage, store at -20°C in small aliquots to prevent freeze-thaw cycles.
Stability:	Shelf life: one year from despatch.
Predicted Protein Size:	42kDa
Gene Name:	chromosome 1 open reading frame 159
Database Link:	<a href="#">CA114318</a> <a href="#">Entrez Gene 54991 Human</a> <a href="#">Q96HA4</a>
Background:	The exact function of C1orf159 remains unknown.
Synonyms:	FLJ20584; FLJ21143; FLJ36119; OTTHUMP00000000896



[View online »](#)

## Product images:



WB Suggested Anti-C1orf159 Antibody Titration:  
0.2-1 ug/ml  
ELISA Titer: 1:1562500  
Positive Control: HepG2 cell lysate