

Product datasheet for **TA356641**

TMEM132A Rabbit Polyclonal Antibody

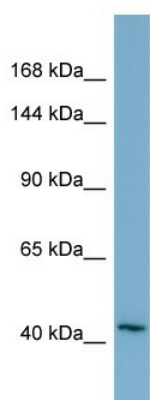
Product data:

Product Type:	Primary Antibodies
Applications:	WB
Reactivity:	Human
Host:	Rabbit
Clonality:	Polyclonal
Immunogen:	The immunogen is a synthetic peptide directed towards the N-terminal region of Human TMEM132A
Specificity:	Expected reactivity: Cow, Dog, Horse, Human, Mouse, Pig, Rabbit, Rat Homology: Cow: 100%; Dog: 100%; Horse: 93%; Human: 100%; Mouse: 100%; Pig: 93%; Rabbit: 92%; Rat: 100%
Formulation:	Liquid. Purified antibody supplied in 1x PBS buffer with 0.09% (w/v) sodium azide and 2% sucrose. <i>Note that this product is shipped as lyophilized powder to China customers.</i>
Concentration:	lot specific
Purification:	Affinity Purified
Conjugation:	Unconjugated
Storage:	For short term use, store at 2-8°C up to 1 week. For long term storage, store at -20°C in small aliquots to prevent freeze-thaw cycles.
Stability:	Shelf life: one year from despatch.
Predicted Protein Size:	45kDa
Gene Name:	transmembrane protein 132A
Database Link:	Entrez Gene 54972 Human Q24JP5-3
Background:	This gene encodes a protein that is highly similar to the rat Grp78-binding protein (GBP). Alternatively spliced transcript variants encoding different isoforms have been described.
Synonyms:	DKFZp547E212; FLJ20539; GBP; HSPA5BP1; KIAA1583; MGC138669



[View online »](#)

Product images:



Host: Rabbit
Target Name: TMEM132A
Sample Type: THP-1 Whole cell lysates
Antibody Dilution: 1.0ug/ml