

## Product datasheet for **TA356635**

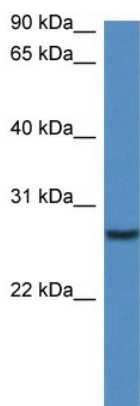
### Clec1b Rabbit Polyclonal Antibody

#### Product data:

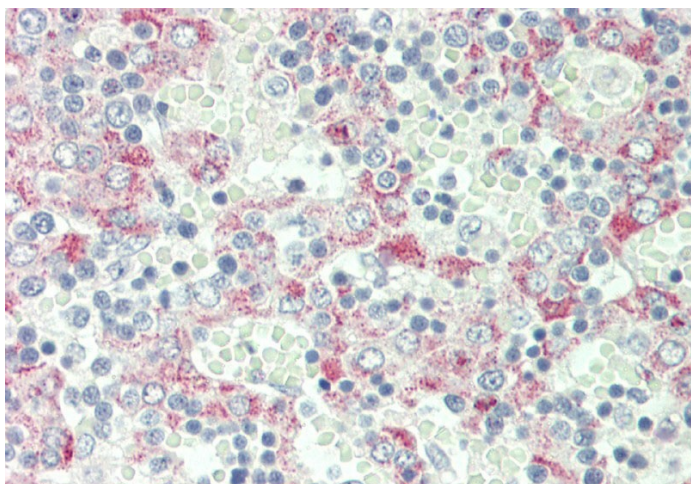
Product Type:	Primary Antibodies
Applications:	WB
Reactivity:	Human, Mouse
Host:	Rabbit
Clonality:	Polyclonal
Specificity:	<b>Expected reactivity:</b> Cow, Dog, Guinea Pig, Horse, Human, Mouse, Rabbit, Rat, Yeast <b>Homology:</b> Cow: 86%; Dog: 100%; Guinea Pig: 86%; Horse: 86%; Human: 100%; Mouse: 93%; Rabbit: 85%; Rat: 93%; Yeast: 100%
Formulation:	Liquid. Purified antibody supplied in 1x PBS buffer with 0.09% (w/v) sodium azide and 2% sucrose. <i>Note that this product is shipped as lyophilized powder to China customers.</i>
Concentration:	lot specific
Purification:	Affinity Purified
Conjugation:	Unconjugated
Storage:	For short term use, store at 2-8°C up to 1 week. For long term storage, store at -20°C in small aliquots to prevent freeze-thaw cycles.
Stability:	Shelf life: one year from despatch.
Predicted Protein Size:	26kDa
Gene Name:	C-type lectin domain family 1, member b
Database Link:	<a href="#">NP_064369</a> <a href="#">Entrez Gene 51266 Human</a> <a href="#">Entrez Gene 56760 Mouse</a> <a href="#">Q9JL99</a>
Background:	Clec1b acts as a receptor for the platelet-aggregating snake venom protein rhodocytin. Rhodocytin binding leads to tyrosine phosphorylation and this promotes the binding of spleen tyrosine kinase (Syk) and initiation of downstream tyrosine phosphorylation events and activation of PLC-gamma-2.
Synonyms:	1810061I13Rik; CLEC-2; CLEC2; CLEC2B; PRO1384; QDED721



[View online »](#)

**Product images:**

WB Suggested Anti-Clec1b Antibody  
Titration: 1.0 ug/ml  
Positive Control: Mouse Pancreas



Rabbit Anti-Clec1b antibody  
Catalog Number: ARP47260  
Formalin Fixed Paraffin Embedded Tissue:  
Human Fetal Liver  
Primary antibody Concentration: 1:50  
Secondary Antibody: Donkey anti-Rabbit-Cy3  
Secondary Antibody Concentration: 1:200  
Magnification: 20x  
Exposure Time: 0.5-2.0sec