

## Product datasheet for **TA356632**

### NOX3 Rabbit Polyclonal Antibody

#### Product data:

Product Type:	Primary Antibodies
Applications:	IHC
Reactivity:	Human
Host:	Rabbit
Clonality:	Polyclonal
Immunogen:	The immunogen is a synthetic peptide directed towards the following sequence KQIAYNHPSSSIGVFFCGPKALSRTLQKMCHLYSSADPRGVHFFYNNKESF
Specificity:	<b>Expected reactivity:</b> Cow, Dog, Guinea Pig, Horse, Human, Mouse, Pig, Rabbit, Rat <b>Homology:</b> Cow: 100%; Dog: 100%; Guinea Pig: 93%; Horse: 100%; Human: 100%; Mouse: 92%; Pig: 100%; Rabbit: 100%; Rat: 92%
Formulation:	Liquid. Purified antibody supplied in 1x PBS buffer with 0.09% (w/v) sodium azide and 2% sucrose.
Concentration:	lot specific
Purification:	Affinity Purified
Conjugation:	Unconjugated
Storage:	For short term use, store at 2-8°C up to 1 week. For long term storage, store at -20°C in small aliquots to prevent freeze-thaw cycles.
Stability:	Shelf life: one year from despatch.
Predicted Protein Size:	65 kDa
Gene Name:	NADPH oxidase 3
Database Link:	<a href="#">NP_056533</a> <a href="#">Entrez Gene 50508 Human</a> <a href="#">Q9HBY0</a>



[View online »](#)

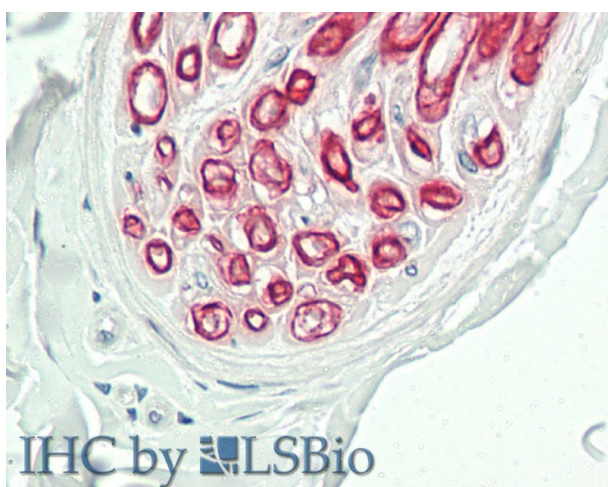
**Background:** This gene encodes a member of the NOX family of NADPH oxidases. These enzymes have the capacity to generate superoxide and other reactive oxygen species (ROS) and transport electrons across the plasma membrane. The ROS generated by family members have been implicated in numerous biological functions including host defense, posttranslational processing of proteins, cellular signaling, regulation of gene expression, and cell differentiation. The protein encoded by this gene is expressed predominantly in the inner ear and is involved in the biogenesis of otoconia/otolith, which are crystalline structures of the inner ear involved in the perception of gravity.

**Synonyms:** GP91-3; MOX2

**Protein Families:** Transmembrane

**Protein Pathways:** Leukocyte transendothelial migration

### Product images:



Rabbit Anti-NOX3 antibody  
Catalog Number: ARP47185  
Formalin Fixed Paraffin Embedded Tissue:  
Human Peripheral Nerve  
Primary antibody Concentration: 1:100  
Secondary Antibody: Donkey anti-Rabbit-Cy3  
Secondary Antibody Concentration: 1:200  
Magnification: 20x  
Exposure Time: 0.5-2.0sec