

## Product datasheet for **TA356630**

### PCDHB5 Rabbit Polyclonal Antibody

#### Product data:

Product Type:	Primary Antibodies
Applications:	WB
Reactivity:	Human
Host:	Rabbit
Clonality:	Polyclonal
Immunogen:	The immunogen is a synthetic peptide directed towards the N-terminal region of Human PCDHB5
Specificity:	<b>Expected reactivity:</b> Cow, Guinea Pig, Human, Mouse, Rabbit, Rat <b>Homology:</b> Cow: 77%; Guinea Pig: 85%; Human: 100%; Mouse: 92%; Rabbit: 75%; Rat: 100%
Formulation:	Liquid. Purified antibody supplied in 1x PBS buffer with 0.09% (w/v) sodium azide and 2% sucrose. <i>Note that this product is shipped as lyophilized powder to China customers.</i>
Concentration:	lot specific
Purification:	Affinity Purified
Conjugation:	Unconjugated
Storage:	For short term use, store at 2-8°C up to 1 week. For long term storage, store at -20°C in small aliquots to prevent freeze-thaw cycles.
Stability:	Shelf life: one year from despatch.
Predicted Protein Size:	87kDa
Gene Name:	protocadherin beta 5
Database Link:	<a href="#">NP_056484</a> <a href="#">Entrez Gene 26167 Human</a> <a href="#">Q9Y5E4</a>



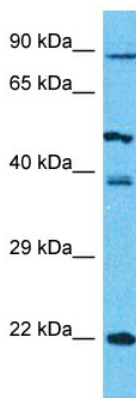
[View online »](#)

**Background:**

This gene is a member of the protocadherin beta gene cluster, one of three related gene clusters tandemly linked on chromosome five. The gene clusters demonstrate an unusual genomic organization similar to that of B-cell and T-cell receptor gene clusters. The beta cluster contains 16 genes and 3 pseudogenes, each encoding 6 extracellular cadherin domains and a cytoplasmic tail that deviates from others in the cadherin superfamily. The extracellular domains interact in a homophilic manner to specify differential cell-cell connections. Unlike the alpha and gamma clusters, the transcripts from these genes are made up of only one large exon, not sharing common 3' exons as expected. These neural cadherin-like cell adhesion proteins are integral plasma membrane proteins. Their specific functions are unknown but they most likely play a critical role in the establishment and function of specific cell-cell neural connections.

**Synonyms:**

DKFZp586B0217; PCDH-beta-5; PCDH-BETA5

**Product images:**

Host: Rabbit  
Target Name: PCDHB5  
Sample Tissue: 293T Cell Lysate  
Antibody Dilution: 1.0µg/ml

Host: Rabbit  
Target Name: PCDHB5  
Sample Type: 293T Whole Cell lysates  
Antibody Dilution: 1.0ug/ml