

Product datasheet for TA356629

PARM 1 (PARM1) Rabbit Polyclonal Antibody

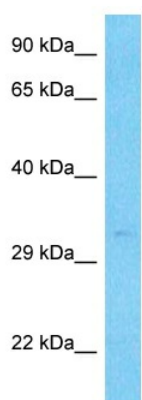
Product data:

Product Type:	Primary Antibodies
Applications:	WB
Reactivity:	Human
Host:	Rabbit
Clonality:	Polyclonal
Immunogen:	The immunogen is a synthetic peptide directed towards the N-terminal region of Human PARM1
Specificity:	Expected reactivity: Human Homology: Human: 100%
Formulation:	Liquid. Purified antibody supplied in 1x PBS buffer with 0.09% (w/v) sodium azide and 2% sucrose.
Concentration:	lot specific
Purification:	Affinity purified
Conjugation:	Unconjugated
Storage:	For short term use, store at 2-8°C up to 1 week. For long term storage, store at -20°C in small aliquots to prevent freeze-thaw cycles.
Stability:	Shelf life: one year from despatch.
Predicted Protein Size:	34kDa
Gene Name:	prostate androgen-regulated mucin-like protein 1
Database Link:	NP_056208 Entrez Gene 25849 Human Q6UWI2
Background:	PARM1 may regulate TLP1 expression and telomerase activity, thus enabling certain prostatic cells to resist apoptosis.
Synonyms:	2210012L08Rik; 9130213B05Rik; CIPAR-1; Cipar1; PARM-1; W91666



[View online »](#)

Product images:



Host: Rabbit
Target Name: PARM1
Sample Tissue: NCI-H226 Cell Lysate
Antibody Dilution: 1.0µg/ml

Host: Rabbit
Target Name: PARM1
Sample Type: NCI-H226 Whole Cell lysates
Antibody Dilution: 1.0ug/ml