

Product datasheet for **TA356627**

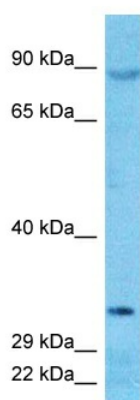
DNAJC16 Rabbit Polyclonal Antibody

Product data:

Product Type:	Primary Antibodies
Applications:	WB
Reactivity:	Human
Host:	Rabbit
Clonality:	Polyclonal
Immunogen:	The immunogen is a synthetic peptide directed towards the N-terminal region of Human DJC16
Specificity:	Expected reactivity: Cow, Dog, Horse, Human, Mouse, Pig, Rabbit, Rat Homology: Cow: 93%; Dog: 100%; Horse: 93%; Human: 100%; Mouse: 100%; Pig: 100%; Rabbit: 100%; Rat: 92%
Formulation:	Liquid. Purified antibody supplied in 1x PBS buffer with 0.09% (w/v) sodium azide and 2% sucrose.
Concentration:	lot specific
Purification:	Affinity purified
Conjugation:	Unconjugated
Storage:	For short term use, store at 2-8°C up to 1 week. For long term storage, store at -20°C in small aliquots to prevent freeze-thaw cycles.
Stability:	Shelf life: one year from despatch.
Predicted Protein Size:	86kDa
Gene Name:	Dnaj heat shock protein family (Hsp40) member C16
Database Link:	NP_056106 Entrez Gene 23341 Human Q9Y2G8
Synonyms:	DKFZp686G1298; DKFZp686N0387; DKFZp78111547; KIAA0962



[View online »](#)

Product images:

Host: Rabbit
Target Name: DJC16
Sample Tissue: PANC1 Cell Lysate
Antibody Dilution: 1.0 μ g/ml

Host: Rabbit
Target Name: DJC16
Sample Type: PANC1 Whole Cell lysates
Antibody Dilution: 1.0 μ g/ml