

## Product datasheet for **TA356626**

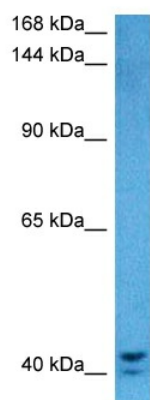
### KIAA0100 Rabbit Polyclonal Antibody

#### Product data:

Product Type:	Primary Antibodies
Applications:	WB
Reactivity:	Human
Host:	Rabbit
Clonality:	Polyclonal
Immunogen:	The immunogen is a synthetic peptide directed towards the middle region of human KIAA0100
Specificity:	<b>Expected reactivity:</b> Human <b>Homology:</b> Cow: 100%; Dog: 100%; Goat: 82%; Guinea Pig: 100%; Horse: 100%; Human: 100%; Mouse: 93%; Rabbit: 100%; Rat: 100%; Zebrafish: 79%
Formulation:	Liquid. Purified antibody supplied in 1x PBS buffer with 0.09% (w/v) sodium azide and 2% sucrose.
Concentration:	lot specific
Purification:	Affinity purified
Conjugation:	Unconjugated
Storage:	For short term use, store at 2-8°C up to 1 week. For long term storage, store at -20°C in small aliquots to prevent freeze-thaw cycles.
Stability:	Shelf life: one year from despatch.
Predicted Protein Size:	42 kDa
Gene Name:	KIAA0100
Database Link:	<a href="#">NP_055495.2</a> <a href="#">Entrez Gene 9703 Human</a> <a href="#">Q14667-3</a>
Background:	May be involved in membrane trafficking.
Synonyms:	BCOX; BCOX1; CT101; DKFZp686M0843; MGC111488; MGC134981
Protein Families:	Transmembrane



[View online »](#)

**Product images:**


Host: Rabbit  
 Target Name: KIAA0100  
 Sample Type: 293T Cell Lysate  
 Antibody Dilution: 1.0µg/ml

Host: Rabbit  
 Target Name: KIAA0100  
 Sample Tissue: Human 293T Whole Cell lysates  
 Antibody Dilution: 1ug/ml