

## Product datasheet for **TA356622**

### SACM1L Rabbit Polyclonal Antibody

#### Product data:

Product Type:	Primary Antibodies
Applications:	WB
Reactivity:	Human
Host:	Rabbit
Clonality:	Polyclonal
Immunogen:	The immunogen is a synthetic peptide directed towards the N-terminal region of human SACM1L
Specificity:	<b>Expected reactivity:</b> Cow, Dog, Guinea Pig, Horse, Human, Mouse, Rabbit, Rat, Zebrafish <b>Homology:</b> Cow: 100%; Dog: 100%; Guinea Pig: 100%; Horse: 100%; Human: 100%; Mouse: 100%; Rabbit: 100%; Rat: 100%; Zebrafish: 100%
Formulation:	Liquid. Purified antibody supplied in 1x PBS buffer with 0.09% (w/v) sodium azide and 2% sucrose. <i>Note that this product is shipped as lyophilized powder to China customers.</i>
Concentration:	lot specific
Purification:	Affinity Purified
Conjugation:	Unconjugated
Storage:	For short term use, store at 2-8°C up to 1 week. For long term storage, store at -20°C in small aliquots to prevent freeze-thaw cycles.
Stability:	Shelf life: one year from despatch.
Predicted Protein Size:	31kDa
Gene Name:	SAC1 suppressor of actin mutations 1-like (yeast)
Database Link:	<a href="#">NP_054735.3</a> <a href="#">Entrez Gene 22908 Human</a> <a href="#">Q9NTJ5</a>
Background:	This gene encodes an integral membrane protein that is localized to the endoplasmic reticulum and golgi, and functions as a phosphoinositide lipid phosphatase. Studies in mammals suggest that this gene is involved in the organization of golgi membranes and the mitotic spindles. Alternatively spliced transcript variants have been found for this gene.

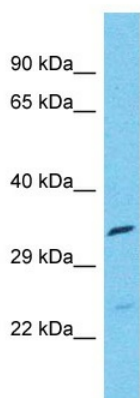


[View online »](#)

Synonyms: DKFZp686A0231; KIAA0851; SAC1

Protein Families: Druggable Genome, Transmembrane

### Product images:



Host: Rabbit  
Target Name: SACM1L  
Sample Type: Thyroid Tumor lysates  
Antibody Dilution: 1.0ug/ml