

Product datasheet for **TA356606**

NINL Rabbit Polyclonal Antibody

Product data:

Product Type:	Primary Antibodies
Applications:	IHC, WB
Reactivity:	Human
Host:	Rabbit
Clonality:	Polyclonal
Immunogen:	The immunogen is a synthetic peptide directed towards the middle region of Human NINL
Specificity:	Expected reactivity: Cow, Dog, Horse, Human, Mouse, Pig, Rabbit, Rat, Yeast Homology: Cow: 85%; Dog: 92%; Horse: 93%; Human: 100%; Mouse: 86%; Pig: 92%; Rabbit: 93%; Rat: 86%; Yeast: 83%
Formulation:	Liquid. Purified antibody supplied in 1x PBS buffer with 0.09% (w/v) sodium azide and 2% sucrose. <i>Note that this product is shipped as lyophilized powder to China customers.</i>
Concentration:	lot specific
Purification:	Affinity Purified
Conjugation:	Unconjugated
Storage:	For short term use, store at 2-8°C up to 1 week. For long term storage, store at -20°C in small aliquots to prevent freeze-thaw cycles.
Stability:	Shelf life: one year from despatch.
Predicted Protein Size:	113kDa
Gene Name:	ninein like
Database Link:	Entrez Gene 22981 Human Q9Y2I6-2
Background:	The function of this protein remains unknown.
Synonyms:	dj691N24.1; FLJ11792; KIAA0980; ninein-like; NLP

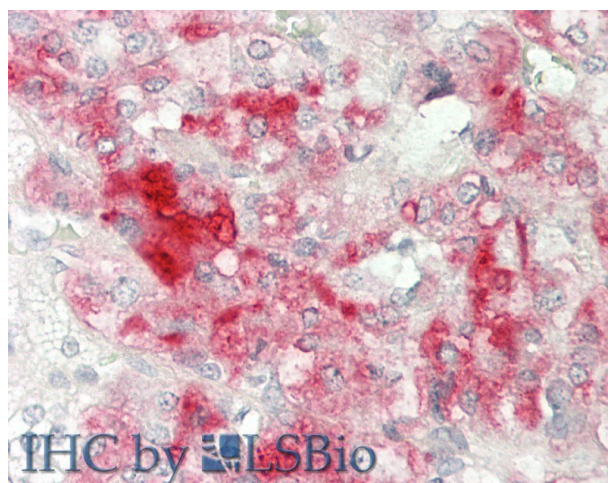


[View online »](#)

Product images:



Host: Rabbit
Target Name: NINL
Sample Type: HeLa Whole Cell lysates
Antibody Dilution: 1.0ug/ml



Rabbit Anti-NINL antibody
Catalog Number: ARP46344
Formalin Fixed Paraffin Embedded Tissue:
Human Adrenal
Primary antibody Concentration: 1:100
Secondary Antibody: Donkey anti-Rabbit-Cy3
Secondary Antibody Concentration: 1:200
Magnification: 20x
Exposure Time: 0.5-2.0sec