

## Product datasheet for **TA356605**

### **NUSAP1 Rabbit Polyclonal Antibody**

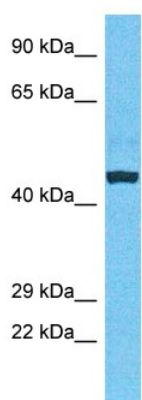
#### **Product data:**

Product Type:	Primary Antibodies
Applications:	WB
Reactivity:	Human
Host:	Rabbit
Clonality:	Polyclonal
Immunogen:	The immunogen is a synthetic peptide directed towards the middle region of Human NUSAP
Specificity:	<b>Expected reactivity:</b> Human <b>Homology:</b> Human: 100%
Formulation:	Liquid. Purified antibody supplied in 1x PBS buffer with 0.09% (w/v) sodium azide and 2% sucrose. <i>Note that this product is shipped as lyophilized powder to China customers.</i>
Concentration:	lot specific
Purification:	Affinity purified
Conjugation:	Unconjugated
Storage:	For short term use, store at 2-8°C up to 1 week. For long term storage, store at -20°C in small aliquots to prevent freeze-thaw cycles.
Stability:	Shelf life: one year from despatch.
Predicted Protein Size:	48kDa
Gene Name:	nucleolar and spindle associated protein 1
Database Link:	<a href="#">Entrez Gene 51203 Human</a> <a href="#">Q9BXS6</a>
Background:	NUSAP1 is a nucleolar-spindle-associated protein that plays a role in spindle microtubule organization (Raemaekers et al., 2003 [PubMed 12963707]).[supplied by OMIM, Jun 2009]
Synonyms:	ANKT; BM037; FLJ13421; LNP; NUSAP; PRO0310p1; Q0310; SAPL



[View online »](#)

Product images:



Host: Rabbit  
Target Name: NUSAP  
Sample Tissue: Fetal Liver Lysate  
Antibody Dilution: 1.0 $\mu$ g/ml

Host: Rabbit  
Target Name: NUSAP  
Sample Type: Fetal Liver lysates  
Antibody Dilution: 1.0ug/ml