

## Product datasheet for **TA356602**

### **FAM82B (RMDN1) Rabbit Polyclonal Antibody**

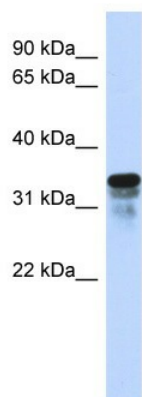
#### **Product data:**

Product Type:	Primary Antibodies
Applications:	WB
Reactivity:	Human
Host:	Rabbit
Clonality:	Polyclonal
Immunogen:	The immunogen is a synthetic peptide directed towards the N terminal region of human FAM82B
Specificity:	<b>Expected reactivity:</b> Human <b>Homology:</b> Human: 100%
Formulation:	Liquid. Purified antibody supplied in 1x PBS buffer with 0.09% (w/v) sodium azide and 2% sucrose.
Concentration:	lot specific
Purification:	Affinity Purified
Conjugation:	Unconjugated
Storage:	For short term use, store at 2-8°C up to 1 week. For long term storage, store at -20°C in small aliquots to prevent freeze-thaw cycles.
Stability:	Shelf life: one year from despatch.
Predicted Protein Size:	36kDa
Gene Name:	regulator of microtubule dynamics 1
Database Link:	<a href="#">NP_057117</a> <a href="#">Entrez Gene 51115 Human</a> <a href="#">Q96DB5</a>
Background:	The specific function of FAM82B is not yet known.
Synonyms:	CGI-90; FAM82B; RMD-1; RMD1



[View online »](#)

## Product images:



WB Suggested Anti-FAM82B Antibody Titration:  
0.2-1 ug/ml  
ELISA Titer: 1:62500  
Positive Control: Transfected 293T