

## Product datasheet for **TA356598**

### **p53R2 (RRM2B) Rabbit Polyclonal Antibody**

#### **Product data:**

Product Type:	Primary Antibodies
Applications:	WB
Reactivity:	Human
Host:	Rabbit
Clonality:	Polyclonal
Immunogen:	The immunogen is a synthetic peptide directed towards the middle region of Human RRM2B
Specificity:	<b>Expected reactivity:</b> Cow, Dog, Guinea Pig, Horse, Human, Mouse, Pig, Rabbit, Rat, Yeast, Zebrafish <b>Homology:</b> Cow: 93%; Dog: 93%; Guinea Pig: 86%; Horse: 93%; Human: 100%; Mouse: 93%; Pig: 93%; Rabbit: 100%; Rat: 93%; Yeast: 93%; Zebrafish: 93%
Formulation:	Liquid. Purified antibody supplied in 1x PBS buffer with 0.09% (w/v) sodium azide and 2% sucrose. <i>Note that this product is shipped as lyophilized powder to China customers.</i>
Concentration:	lot specific
Purification:	Affinity Purified
Conjugation:	Unconjugated
Storage:	For short term use, store at 2-8°C up to 1 week. For long term storage, store at -20°C in small aliquots to prevent freeze-thaw cycles.
Stability:	Shelf life: one year from despatch.
Predicted Protein Size:	32kDa
Gene Name:	ribonucleotide reductase regulatory TP53 inducible subunit M2B
Database Link:	<a href="#">Entrez Gene 50484 Human</a> <a href="#">Q7LG56-2</a>



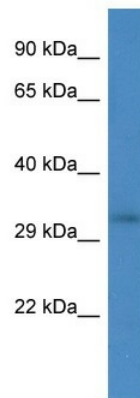
[View online »](#)

**Background:**

This gene encodes the small subunit of a p53-inducible ribonucleotide reductase. This heterotetrameric enzyme catalyzes the conversion of ribonucleoside diphosphates to deoxyribonucleoside diphosphates. The product of this reaction is necessary for DNA synthesis. Mutations in this gene have been associated with autosomal recessive mitochondrial DNA depletion syndrome, autosomal dominant progressive external ophthalmoplegia-5, and mitochondrial neurogastrointestinal encephalopathy. Alternatively spliced transcript variants have been described.

**Synonyms:**

DKFZp686M05248; MGC42116; MGC102856; p53R2; PEOA5

**Product images:**

Host: Rabbit  
Target Name: RRM2B  
Sample Type: 293T Whole cell lysates  
Antibody Dilution: 1.0ug/ml