

Product datasheet for TA356597

GUCY1B1 Rabbit Polyclonal Antibody

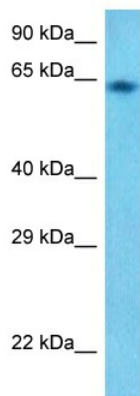
Product data:

Product Type:	Primary Antibodies
Reactivity:	Human
Host:	Rabbit
Clonality:	Polyclonal
Immunogen:	The immunogen is a synthetic peptide directed towards the following sequence VTGVIGQRMPRYCLFGNTVNLTSRTETTGEKKGKINVSEYTYRCLMSPENS
Specificity:	Expected reactivity: Cow, Dog, Guinea Pig, Horse, Human, Mouse, Rabbit, Rat, Zebrafish Homology: Cow: 100%; Dog: 100%; Guinea Pig: 100%; Horse: 100%; Human: 100%; Mouse: 100%; Rabbit: 100%; Rat: 100%; Zebrafish: 100%
Formulation:	Liquid. Purified antibody supplied in 1x PBS buffer with 0.09% (w/v) sodium azide and 2% sucrose. <i>Note that this product is shipped as lyophilized powder to China customers.</i>
Concentration:	lot specific
Purification:	Affinity Purified
Conjugation:	Unconjugated
Storage:	For short term use, store at 2-8°C up to 1 week. For long term storage, store at -20°C in small aliquots to prevent freeze-thaw cycles.
Stability:	Shelf life: one year from despatch.
Predicted Protein Size:	71 kDa
Gene Name:	guanylate cyclase 1, soluble, beta 3
Database Link:	NP_000848 Entrez Gene 2983 Human Q02153
Background:	This gene encodes the beta subunit of the soluble guanylate cyclase (sGC), which catalyzes the conversion of GTP (guanosine triphosphate) to cGMP (cyclic guanosine monophosphate). The encoded protein contains an HNOX domain, which serves as a receptor for ligands such as nitric oxide, oxygen and nitrovasodilator drugs. Alternative splicing results in multiple transcript variants.



[View online »](#)

Synonyms: GC-S-beta-1; GC-SB3; GCS-beta-1; GCS-beta-3; GUC1B3; GUCB3; GUCSB3; GUCY1B1
Protein Families: Druggable Genome
Protein Pathways: Gap junction, Long-term depression, Purine metabolism, Vascular smooth muscle contraction

Product images:

Host: Rabbit
Target Name: GUCYB1
Sample Tissue: HepG2 Cell Lysate
Antibody Dilution: 2.0µg/ml

Host: Rabbit
Target Name: GUCY1B3
Sample Tissue: Human HepG2 Whole cell
Antibody Dilution: 1ug/ml