

## Product datasheet for **TA356584**

### **C21orf70 (FAM207A) Rabbit Polyclonal Antibody**

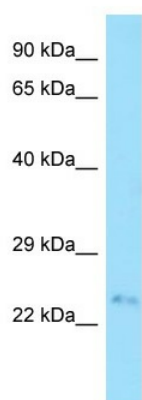
#### **Product data:**

Product Type:	Primary Antibodies
Applications:	WB
Reactivity:	Human
Host:	Rabbit
Clonality:	Polyclonal
Specificity:	<b>Expected reactivity:</b> Cow, Horse, Human, Mouse, Pig <b>Homology:</b> Cow: 75%; Horse: 86%; Human: 100%; Mouse: 77%; Pig: 93%
Formulation:	Liquid. Purified antibody supplied in 1x PBS buffer with 0.09% (w/v) sodium azide and 2% sucrose. <i>Note that this product is shipped as lyophilized powder to China customers.</i>
Concentration:	lot specific
Purification:	Affinity Purified
Conjugation:	Unconjugated
Storage:	For short term use, store at 2-8°C up to 1 week. For long term storage, store at -20°C in small aliquots to prevent freeze-thaw cycles.
Stability:	Shelf life: one year from despatch.
Predicted Protein Size:	25kDa
Gene Name:	family with sequence similarity 207 member A
Database Link:	<a href="#">NP_478070</a> <a href="#">Entrez Gene 85395 Human</a> <a href="#">Q9NSI2</a>
Background:	The function of this protein remains unknown.
Synonyms:	C21orf70; PRED56



[View online »](#)

**Product images:**



WB Suggested Anti-FAM207A Antibody  
Titration: 1.0 ug/ml  
Positive Control: Fetal Small Intestine