

## Product datasheet for **TA356583**

### OLIG1 Rabbit Polyclonal Antibody

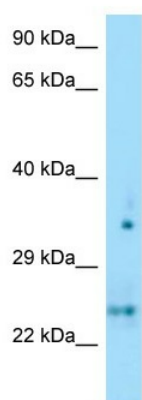
#### Product data:

Product Type:	Primary Antibodies
Applications:	WB
Reactivity:	Human
Host:	Rabbit
Clonality:	Polyclonal
Specificity:	<b>Expected reactivity:</b> Cow, Dog, Guinea Pig, Human, Mouse, Rabbit, Rat <b>Homology:</b> Cow: 100%; Dog: 100%; Guinea Pig: 100%; Human: 100%; Mouse: 93%; Rabbit: 100%; Rat: 93%
Formulation:	Liquid. Purified antibody supplied in 1x PBS buffer with 0.09% (w/v) sodium azide and 2% sucrose. <i>Note that this product is shipped as lyophilized powder to China customers.</i>
Concentration:	lot specific
Purification:	Affinity Purified
Conjugation:	Unconjugated
Storage:	For short term use, store at 2-8°C up to 1 week. For long term storage, store at -20°C in small aliquots to prevent freeze-thaw cycles.
Stability:	Shelf life: one year from despatch.
Predicted Protein Size:	26kDa
Gene Name:	oligodendrocyte transcription factor 1
Database Link:	<a href="#">NP_620450</a> <a href="#">Entrez Gene 116448 Human</a> <a href="#">Q8TAK6</a>
Background:	OLIG1 promotes formation and maturation of oligodendrocytes, especially within the brain. OLIG1 cooperates with OLIG2 to establish the pMN domain of the embryonic neural tube.
Synonyms:	BHLHB6; BHLHE21; Oligo1
Protein Families:	Druggable Genome



[View online »](#)

## Product images:



WB Suggested Anti-OLIG1 Antibody  
Titration: 1.0 ug/ml  
Positive Control: Fetal Thymus