

## Product datasheet for **TA356582**

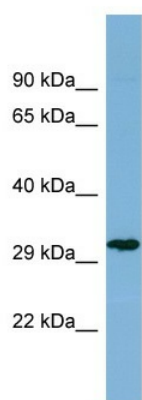
### TCP10L3 Rabbit Polyclonal Antibody

#### Product data:

Product Type:	Primary Antibodies
Applications:	WB
Reactivity:	Human
Host:	Rabbit
Clonality:	Polyclonal
Immunogen:	The immunogen is a synthetic peptide directed towards the N-terminal region of Human TCP10
Specificity:	<b>Expected reactivity:</b> Human <b>Homology:</b> Human: 100%
Formulation:	Liquid. Purified antibody supplied in 1x PBS buffer with 0.09% (w/v) sodium azide and 2% sucrose.
Concentration:	lot specific
Purification:	Affinity Purified
Conjugation:	Unconjugated
Storage:	For short term use, store at 2-8°C up to 1 week. For long term storage, store at -20°C in small aliquots to prevent freeze-thaw cycles.
Stability:	Shelf life: one year from despatch.
Predicted Protein Size:	35kDa
Gene Name:	t-complex 10
Database Link:	<a href="#">Entrez Gene 6953 Human</a> <a href="#">Q12799-2</a>
Background:	The exact function of TCP10 remains unknown.
Synonyms:	MGC34049; TCP10A



[View online »](#)

**Product images:**

Host: Rabbit  
Target Name: TCP10  
Sample Type: THP-1 whole cell lysates  
Antibody Dilution: 1.0ug/ml