

## Product datasheet for **TA356578**

### MORC3 Rabbit Polyclonal Antibody

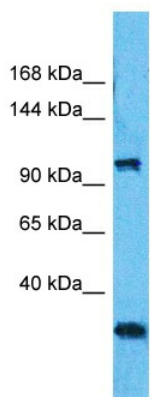
#### Product data:

Product Type:	Primary Antibodies
Applications:	WB
Reactivity:	Human
Host:	Rabbit
Clonality:	Polyclonal
Immunogen:	The immunogen is a synthetic peptide directed towards the C-terminal region of Human MORC3
Specificity:	<b>Expected reactivity:</b> Dog, Guinea Pig, Horse, Human, Mouse, Rabbit, Rat, Yeast <b>Homology:</b> Dog: 79%; Guinea Pig: 79%; Horse: 79%; Human: 100%; Mouse: 79%; Rabbit: 79%; Rat: 79%; Yeast: 100%
Formulation:	Liquid. Purified antibody supplied in 1x PBS buffer with 0.09% (w/v) sodium azide and 2% sucrose. <i>Note that this product is shipped as lyophilized powder to China customers.</i>
Concentration:	lot specific
Purification:	Affinity purified
Conjugation:	Unconjugated
Storage:	For short term use, store at 2-8°C up to 1 week. For long term storage, store at -20°C in small aliquots to prevent freeze-thaw cycles.
Stability:	Shelf life: one year from despatch.
Predicted Protein Size:	103kDa
Gene Name:	MORC family CW-type zinc finger 3
Database Link:	<a href="#">NP_056173</a> <a href="#">Entrez Gene 23515 Human</a> <a href="#">Q14149</a>
Background:	This gene encodes a protein that localizes to the nuclear matrix. The protein also has RNA binding activity, and has a predicted coiled-coil domain.
Synonyms:	KIAA0136; NXP2; ZCW5; ZCWCC3



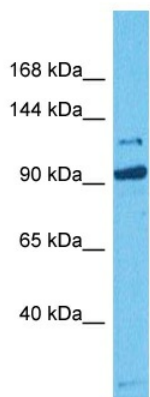
[View online »](#)

Product images:



Host: Rabbit  
 Target Name: MORC3  
 Sample Tissue: 293T Cell Lysate  
 Antibody Dilution: 1.0µg/ml

Host: Rabbit  
 Target Name: MORC3  
 Sample Type: 293T Whole Cell lysates  
 Antibody Dilution: 1.0ug/ml



Host: Rabbit  
 Target Name: MORC3  
 Sample Type: HCT116 Cell Lysate  
 Antibody Dilution: 1.0µg/ml

Host: Rabbit  
 Target Name: MORC3  
 Sample Tissue: Human HCT116 Whole Cell  
 Antibody Dilution: 1ug/ml