

## Product datasheet for **TA356576**

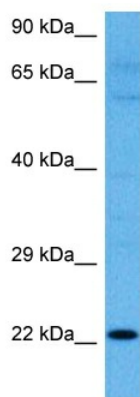
### **KRTAP27-1 Rabbit Polyclonal Antibody**

#### **Product data:**

Product Type:	Primary Antibodies
Applications:	WB
Reactivity:	Human
Host:	Rabbit
Clonality:	Polyclonal
Immunogen:	The immunogen is a synthetic peptide directed towards the N terminal region of human KRTAP27-1
Specificity:	<b>Expected reactivity:</b> Human <b>Homology:</b> Human: 100%; Rabbit: 77%
Formulation:	Liquid. Purified antibody supplied in 1x PBS buffer with 0.09% (w/v) sodium azide and 2% sucrose. <i>Note that this product is shipped as lyophilized powder to China customers.</i>
Concentration:	lot specific
Purification:	Affinity purified
Conjugation:	Unconjugated
Storage:	For short term use, store at 2-8°C up to 1 week. For long term storage, store at -20°C in small aliquots to prevent freeze-thaw cycles.
Stability:	Shelf life: one year from despatch.
Predicted Protein Size:	22 kDa
Gene Name:	keratin associated protein 27-1
Database Link:	<a href="#">NP_001071179.1</a> <a href="#">Entrez Gene 643812 Human</a> <a href="#">Q3L81</a>
Background:	In the hair cortex, hair keratin intermediate filaments are embedded in an interfilamentous matrix, consisting of hair keratin-associated proteins (KRTAP), which are essential for the formation of a rigid and resistant hair shaft through their extensive disulfide bond cross-linking with abundant cysteine residues of hair keratins. The matrix proteins include the high-sulfur and high-glycine-tyrosine keratins.



[View online »](#)

**Product images:**

Host: Rabbit  
Target Name: KRTAP27-1  
Sample Type: RPMI-8226 Cell Lysate  
Antibody Dilution: 1.0 $\mu$ g/ml

Host: Rabbit  
Target Name: KRTAP27-1  
Sample Tissue: Human RPMI 8226 Whole Cell lysates  
Antibody Dilution: 1 ug/ml