

## Product datasheet for **TA356575**

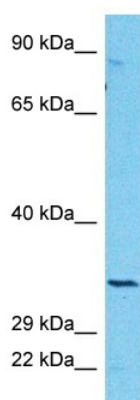
### CBR3 Rabbit Polyclonal Antibody

#### Product data:

Product Type:	Primary Antibodies
Applications:	WB
Reactivity:	Human
Host:	Rabbit
Clonality:	Polyclonal
Immunogen:	The immunogen is a synthetic peptide directed towards the middle region of Human CBR3
Specificity:	<b>Expected reactivity:</b> Cow, Human, Rabbit, Rat <b>Homology:</b> Cow: 79%; Human: 100%; Rabbit: 79%; Rat: 79%
Formulation:	Liquid. Purified antibody supplied in 1x PBS buffer with 0.09% (w/v) sodium azide and 2% sucrose. <i>Note that this product is shipped as lyophilized powder to China customers.</i>
Concentration:	lot specific
Purification:	Affinity purified
Conjugation:	Unconjugated
Storage:	For short term use, store at 2-8°C up to 1 week. For long term storage, store at -20°C in small aliquots to prevent freeze-thaw cycles.
Stability:	Shelf life: one year from despatch.
Predicted Protein Size:	30kDa
Gene Name:	carbonyl reductase 3
Database Link:	<a href="#">NP_001227</a> <a href="#">Entrez Gene 874 Human</a> <a href="#">O75828</a>
Background:	Carbonyl reductase 3 catalyzes the reduction of a large number of biologically and pharmacologically active carbonyl compounds to their corresponding alcohols. The enzyme is classified as a monomeric NADPH-dependent oxidoreductase. CBR3 contains three exons spanning 11.2 kilobases and is closely linked to another carbonyl reductase gene - CBR1.
Synonyms:	hCBR3; SDR21C2



[View online »](#)

**Product images:**

Host: Rabbit  
Target Name: CBR3  
Sample Tissue: COLO205 Cell Lysate  
Antibody Dilution: 1.0 $\mu$ g/ml

Host: Rabbit  
Target Name: CBR3  
Sample Type: COLO205 Whole Cell lysates  
Antibody Dilution: 1.0 $\mu$ g/ml