

## Product datasheet for **TA356574**

### DNAJC28 Rabbit Polyclonal Antibody

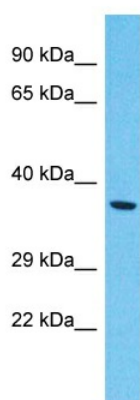
#### Product data:

Product Type:	Primary Antibodies
Applications:	WB
Reactivity:	Human
Host:	Rabbit
Clonality:	Polyclonal
Immunogen:	The immunogen is a synthetic peptide directed towards the N-terminal region of Human DNAJC28
Specificity:	<b>Expected reactivity:</b> Cow, Dog, Horse, Human, Mouse, Pig, Rabbit, Rat <b>Homology:</b> Cow: 86%; Dog: 79%; Horse: 93%; Human: 100%; Mouse: 85%; Pig: 86%; Rabbit: 86%; Rat: 86%
Formulation:	Liquid. Purified antibody supplied in 1x PBS buffer with 0.09% (w/v) sodium azide and 2% sucrose.
Concentration:	lot specific
Purification:	Affinity Purified
Conjugation:	Unconjugated
Storage:	For short term use, store at 2-8°C up to 1 week. For long term storage, store at -20°C in small aliquots to prevent freeze-thaw cycles.
Stability:	Shelf life: one year from despatch.
Predicted Protein Size:	42kDa
Gene Name:	Dnaj heat shock protein family (Hsp40) member C28
Database Link:	<a href="#">NP_060303</a> <a href="#">Entrez Gene 54943 Human</a> <a href="#">Q9NX36</a>
Background:	DNAJC28 may have a role in protein folding or as a chaperone.
Synonyms:	C21orf55; C21orf78; OTTHUMP00000197911



[View online »](#)

Product images:



Host: Rabbit  
Target Name: DNAJC28  
Sample Tissue: 721\_B Cell Lysate  
Antibody Dilution: 1.0µg/ml

Host: Rabbit  
Target Name: DNAJC28  
Sample Type: 721\_B Whole Cell lysates  
Antibody Dilution: 1.0ug/ml