

## Product datasheet for **TA356573**

### **TMEM1 (TRAPPC10) Rabbit Polyclonal Antibody**

#### **Product data:**

Product Type:	Primary Antibodies
Applications:	WB
Reactivity:	Human
Host:	Rabbit
Clonality:	Polyclonal
Immunogen:	The immunogen is a synthetic peptide directed towards the C-terminal region of human TRAPPC10
Specificity:	<b>Expected reactivity:</b> Cow, Dog, Guinea Pig, Horse, Human, Mouse, Rat, Zebrafish <b>Homology:</b> Cow: 100%; Dog: 100%; Guinea Pig: 100%; Horse: 100%; Human: 100%; Mouse: 100%; Rat: 100%; Zebrafish: 79%
Formulation:	Liquid. Purified antibody supplied in 1x PBS buffer with 0.09% (w/v) sodium azide and 2% sucrose.
Concentration:	lot specific
Purification:	Affinity Purified
Conjugation:	Unconjugated
Storage:	For short term use, store at 2-8°C up to 1 week. For long term storage, store at -20°C in small aliquots to prevent freeze-thaw cycles.
Stability:	Shelf life: one year from despatch.
Predicted Protein Size:	30kDa
Gene Name:	trafficking protein particle complex 10
Database Link:	<a href="#">NP_003265.3</a> <a href="#">Entrez Gene 7109 Human</a> <a href="#">Q86SI7</a>
Background:	The protein encoded by this gene is a transmembrane protein found in the cis-Golgi complex. The encoded protein is part of the multisubunit transport protein particle (TRAPP) complex and may be involved in vesicular transport from the endoplasmic reticulum to the Golgi. Mutations in this gene could be responsible for the Unverricht-Lundborg type of progressive myoclonus epilepsy, or for autoimmune polyglandular disease type 1.

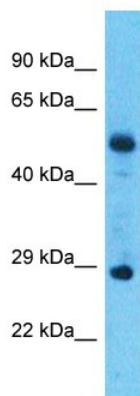


[View online »](#)

**Synonyms:** EHOC-1; EHOC1; FLJ54223; FLJ54817; FLJ55683; GT334; MGC126777; TMEM1; TRS30; TRS130

**Protein Families:** Druggable Genome

### Product images:



Host: Rabbit  
Target Name: TRAPPC10  
Sample Tissue: Esophagus Tumor Lysate  
Antibody Dilution: 1.0µg/ml

Host: Rabbit  
Target Name: TRAPPC10  
Sample Type: Esophagus Tumor lysates  
Antibody Dilution: 1.0ug/ml