

## Product datasheet for **TA356570**

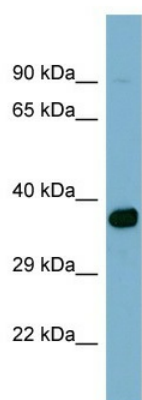
### ACSM2A Rabbit Polyclonal Antibody

#### Product data:

Product Type:	Primary Antibodies
Applications:	WB
Reactivity:	Human
Host:	Rabbit
Clonality:	Polyclonal
Immunogen:	The immunogen is a synthetic peptide directed towards the middle region of human ACSM2A
Specificity:	<b>Expected reactivity:</b> Cow, Dog, Guinea Pig, Human, Mouse, Rabbit, Rat <b>Homology:</b> Cow: 92%; Dog: 92%; Guinea Pig: 100%; Human: 100%; Mouse: 86%; Rabbit: 100%; Rat: 85%
Formulation:	Liquid. Purified antibody supplied in 1x PBS buffer with 0.09% (w/v) sodium azide and 2% sucrose. <i>Note that this product is shipped as lyophilized powder to China customers.</i>
Concentration:	lot specific
Purification:	Affinity Purified
Conjugation:	Unconjugated
Storage:	For short term use, store at 2-8°C up to 1 week. For long term storage, store at -20°C in small aliquots to prevent freeze-thaw cycles.
Stability:	Shelf life: one year from despatch.
Predicted Protein Size:	38kDa
Gene Name:	acyl-CoA synthetase medium-chain family member 2A
Database Link:	<a href="#">NP_001295101.1</a> <a href="#">Entrez Gene 123876 Human</a> <a href="#">Q08AH3</a>
Synonyms:	A-923A4.1; ACSM2; MACS2; MGC150530



[View online »](#)

**Product images:**

Host: Rabbit  
Target Name: ACSM2A  
Sample Type: NCI-H226 Whole cell lysates  
Antibody Dilution: 1.0ug/ml