

## Product datasheet for **TA356569**

### Kininogen 1 (KNG1) Rabbit Polyclonal Antibody

#### Product data:

Product Type:	Primary Antibodies
Applications:	WB
Reactivity:	Human
Host:	Rabbit
Clonality:	Polyclonal
Immunogen:	The immunogen is a synthetic peptide directed towards the C-terminal region of human KNG1
Specificity:	<b>Expected reactivity:</b> Human <b>Homology:</b> Human: 100%
Formulation:	Liquid. Purified antibody supplied in 1x PBS buffer with 0.09% (w/v) sodium azide and 2% sucrose. <i>Note that this product is shipped as lyophilized powder to China customers.</i>
Concentration:	lot specific
Purification:	Affinity Purified
Conjugation:	Unconjugated
Storage:	For short term use, store at 2-8°C up to 1 week. For long term storage, store at -20°C in small aliquots to prevent freeze-thaw cycles.
Stability:	Shelf life: one year from despatch.
Predicted Protein Size:	32kDa
Gene Name:	kininogen 1
Database Link:	<a href="#">NP_000884.1</a> <a href="#">Entrez Gene 3827 Human</a> <a href="#">P01042-2</a>



[View online »](#)

**Background:**

This gene uses alternative splicing to generate two different proteins- high molecular weight kininogen (HMWK) and low molecular weight kininogen (LMWK). HMWK is essential for blood coagulation and assembly of the kallikrein-kinin system. Also, bradykinin, a peptide causing numerous physiological effects, is released from HMWK. Bradykinin also functions as an antimicrobial peptide with antibacterial and antifungal activity. In contrast to HMWK, LMWK is not involved in blood coagulation. Three transcript variants encoding different isoforms have been found for this gene.

**Synonyms:**

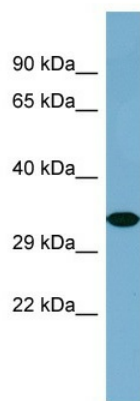
BDK; bradykinin; HMWK; kininogen; KNG

**Protein Families:**

Druggable Genome, Secreted Protein

**Protein Pathways:**

Complement and coagulation cascades

**Product images:**

Host: Rabbit  
Target Name: KNG1  
Sample Type: COLO205 Whole Cell lysates  
Antibody Dilution: 1.0ug/ml