

## Product datasheet for **TA356560**

### Bile Acid Receptor (NR1H4) Rabbit Polyclonal Antibody

#### Product data:

Product Type:	Primary Antibodies
Applications:	WB
Reactivity:	Human
Host:	Rabbit
Clonality:	Polyclonal
Immunogen:	The immunogen is a synthetic peptide directed towards the N-terminal region of human NR1H4
Specificity:	<b>Expected reactivity:</b> Cow, Dog, Horse, Human, Mouse, Pig, Rabbit, Rat <b>Homology:</b> Cow: 93%; Dog: 93%; Horse: 100%; Human: 100%; Mouse: 93%; Pig: 100%; Rabbit: 100%; Rat: 100%
Formulation:	Liquid. Purified antibody supplied in 1x PBS buffer with 0.09% (w/v) sodium azide and 2% sucrose. <i>Note that this product is shipped as lyophilized powder to China customers.</i>
Concentration:	lot specific
Purification:	Affinity Purified
Conjugation:	Unconjugated
Storage:	For short term use, store at 2-8°C up to 1 week. For long term storage, store at -20°C in small aliquots to prevent freeze-thaw cycles.
Stability:	Shelf life: one year from despatch.
Predicted Protein Size:	29kDa
Gene Name:	nuclear receptor subfamily 1 group H member 4
Database Link:	<a href="#">NP_001193906.1</a> <a href="#">Entrez Gene 9971 Human</a> <a href="#">Q96RI1</a>



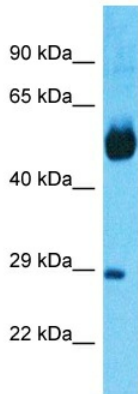
[View online »](#)

**Background:** This gene encodes a ligand-activated transcription factor that shares structural features in common with nuclear hormone receptor family members. This protein functions as a receptor for bile acids, and when bound to bile acids, binds to DNA and regulates the expression of genes involved in bile acid synthesis and transport. Alternatively spliced transcript variants encoding different isoforms have been described.

**Synonyms:** BAR; FXR; HRR-1; HRR1; MGC163445; RIP14

**Protein Families:** Druggable Genome, Nuclear Hormone Receptor, Transcription Factors

### Product images:



Host: Rabbit  
Target Name: NR1H4  
Sample Tissue: Lung Tumor Lysate  
Antibody Dilution: 1.0 $\mu$ g/ml

Host: Rabbit  
Target Name: NR1H4  
Sample Tissue: Human Lung Tumor  
Antibody Dilution: 1 $\mu$ g/ml