

Product datasheet for **TA356554**

UNC5C Rabbit Polyclonal Antibody

Product data:

Product Type:	Primary Antibodies
Applications:	WB
Reactivity:	Human
Host:	Rabbit
Clonality:	Polyclonal
Immunogen:	The immunogen is a synthetic peptide directed towards the C-terminal region of Human UNC5C
Specificity:	Expected reactivity: Cow, Dog, Guinea Pig, Horse, Human, Mouse, Rabbit, Rat, Zebrafish Homology: Cow: 100%; Dog: 100%; Guinea Pig: 100%; Horse: 100%; Human: 100%; Mouse: 100%; Rabbit: 100%; Rat: 100%; Zebrafish: 86%
Formulation:	Liquid. Purified antibody supplied in 1x PBS buffer with 0.09% (w/v) sodium azide and 2% sucrose. <i>Note that this product is shipped as lyophilized powder to China customers.</i>
Concentration:	lot specific
Purification:	Affinity Purified
Conjugation:	Unconjugated
Storage:	For short term use, store at 2-8°C up to 1 week. For long term storage, store at -20°C in small aliquots to prevent freeze-thaw cycles.
Stability:	Shelf life: one year from despatch.
Predicted Protein Size:	65kDa
Gene Name:	unc-5 netrin receptor C
Database Link:	Entrez Gene 8633 Human O95185-2



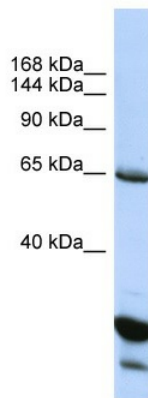
[View online »](#)

Background:

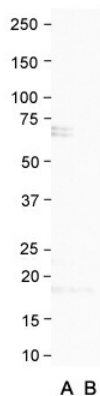
UNC5C belongs to the UNC-5 family of netrin receptors. Netrins are secreted proteins that direct axon extension and cell migration during neural development. They are bifunctional proteins that act as attractants for some cell types and as repellents for others, and these opposite actions are thought to be mediated by two classes of receptors. The UNC-5 family of receptors mediate the repellent response to netrin; they are transmembrane proteins containing 2 immunoglobulin (Ig)-like domains and 2 type I thrombospondin motifs in the extracellular region.

Synonyms:

UNC5H3

Product images:


Host: Rabbit
 Target Name: UNC5C
 Sample Type: HepG2 Whole Cell lysates
 Antibody Dilution: 1.0ug/ml


Anti-UNC5C Western Blot & Peptide Block Validation

Lot Number: QC15599
 Sample Type: Human HepG2
 Lane A: Primary Antibody
 Lane B: Primary Antibody + Blocking Peptide
 Primary Antibody Concentration: 1.0ug/ml
 Peptide Concentration: 2.0ug/ml
 Lysate Quantity: 25ug/lane

Host: Rabbit
 Target Name: UNC5C
 Sample Type: Human HepG2
 Lane A: Primary Antibody
 Lane B: Primary Antibody + Blocking Peptide
 Primary Antibody Concentration: 1.0 ug/ml
 Peptide Concentration: 2.0 ug/ml
 Lysate Quantity: 25 ug/lane