

Product datasheet for **TA356550**

Dysferlin (DYSF) Rabbit Polyclonal Antibody

Product data:

Product Type:	Primary Antibodies
Applications:	WB
Reactivity:	Human
Host:	Rabbit
Clonality:	Polyclonal
Immunogen:	The immunogen is a synthetic peptide directed towards the N terminal region of human DYSF
Specificity:	Expected reactivity: Cow, Dog, Guinea Pig, Horse, Human, Mouse, Rabbit, Rat, Zebrafish Homology: Cow: 100%; Dog: 100%; Guinea Pig: 100%; Horse: 92%; Human: 100%; Mouse: 93%; Rabbit: 100%; Rat: 100%; Zebrafish: 92%
Formulation:	Liquid. Purified antibody supplied in 1x PBS buffer with 0.09% (w/v) sodium azide and 2% sucrose. <i>Note that this product is shipped as lyophilized powder to China customers.</i>
Concentration:	lot specific
Purification:	Affinity Purified
Conjugation:	Unconjugated
Storage:	For short term use, store at 2-8°C up to 1 week. For long term storage, store at -20°C in small aliquots to prevent freeze-thaw cycles.
Stability:	Shelf life: one year from despatch.
Predicted Protein Size:	237kDa
Gene Name:	dysferlin
Database Link:	NP_003485 Entrez Gene 8291 Human O75923
Background:	DYSF belongs to the ferlin family and is a skeletal muscle protein found associated with the sarcolemma. It is involved in muscle contraction and contains C2 domains that play a role in calcium-mediated membrane fusion events, suggesting that it may be in

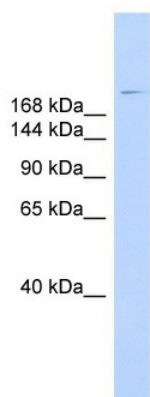


[View online »](#)

Synonyms: dysferlin; FER1L1; FLJ00175; FLJ90168; LGMD2B; OTTHUMP00000202233; OTTHUMP00000202234; OTTHUMP00000202235; OTTHUMP00000202236; OTTHUMP00000202237; OTTHUMP00000202240

Protein Families: Transmembrane

Product images:



WB Suggested Anti-DYSF Antibody Titration: 0.2-1 ug/ml
ELISA Titer: 1:1562500
Positive Control: Human Muscle