

## Product datasheet for **TA356547**

### TMEM187 Rabbit Polyclonal Antibody

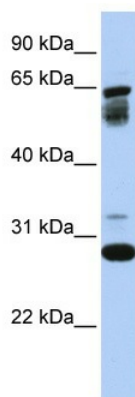
#### Product data:

Product Type:	Primary Antibodies
Applications:	WB
Reactivity:	Human
Host:	Rabbit
Clonality:	Polyclonal
Immunogen:	The immunogen is a synthetic peptide directed towards the middle region of human TMEM187
Specificity:	<b>Expected reactivity:</b> Dog, Horse, Human, Rabbit <b>Homology:</b> Dog: 79%; Horse: 77%; Human: 100%; Rabbit: 86%
Formulation:	Liquid. Purified antibody supplied in 1x PBS buffer with 0.09% (w/v) sodium azide and 2% sucrose.
Concentration:	lot specific
Purification:	Affinity Purified
Conjugation:	Unconjugated
Storage:	For short term use, store at 2-8°C up to 1 week. For long term storage, store at -20°C in small aliquots to prevent freeze-thaw cycles.
Stability:	Shelf life: one year from despatch.
Predicted Protein Size:	29kDa
Gene Name:	transmembrane protein 187
Database Link:	<a href="#">NP_003483</a> <a href="#">Entrez Gene 8269 Human</a> <a href="#">Q14656</a>
Background:	TMEM187 is a multi-pass membrane protein. The exact function of TMEM187 remains unknown.
Synonyms:	CXorf12; DXS9878E; ITBA1



Protein Families: Transmembrane

### Product images:



WB Suggested Anti-TMEM187 Antibody

Titration: 0.2-1 ug/ml

ELISA Titer: 1:312500

Positive Control: 721\_B cell lysate TMEM187 is supported by BioGPS gene expression data to be expressed in 721\_B