

Product datasheet for **TA356543**

TM7SF2 Rabbit Polyclonal Antibody

Product data:

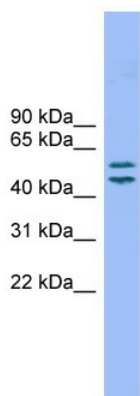
Product Type:	Primary Antibodies
Applications:	WB
Reactivity:	Human
Host:	Rabbit
Clonality:	Polyclonal
Immunogen:	The immunogen is a synthetic peptide directed towards the N terminal region of human TM7SF2
Specificity:	Expected reactivity: Cow, Dog, Goat, Guinea Pig, Horse, Human, Mouse, Rabbit, Rat Homology: Cow: 100%; Dog: 100%; Goat: 93%; Guinea Pig: 100%; Horse: 100%; Human: 100%; Mouse: 85%; Rabbit: 100%; Rat: 100%
Formulation:	Liquid. Purified antibody supplied in 1x PBS buffer with 0.09% (w/v) sodium azide and 2% sucrose. <i>Note that this product is shipped as lyophilized powder to China customers.</i>
Concentration:	lot specific
Purification:	Affinity Purified
Conjugation:	Unconjugated
Storage:	For short term use, store at 2-8°C up to 1 week. For long term storage, store at -20°C in small aliquots to prevent freeze-thaw cycles.
Stability:	Shelf life: one year from despatch.
Predicted Protein Size:	46kDa
Gene Name:	transmembrane 7 superfamily member 2
Database Link:	NP_003264 Entrez Gene 7108 Human O76062
Background:	TM7SF2 is involved in the conversion of lanosterol to cholesterol.
Synonyms:	ANG1; Delta-14-SR; DHCR14A; NET47
Protein Families:	Transmembrane



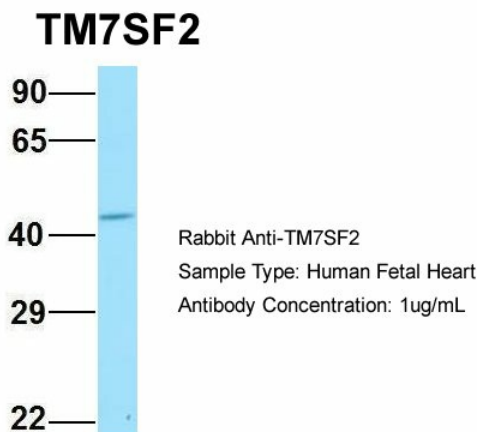
[View online »](#)

Protein Pathways: Metabolic pathways, Steroid biosynthesis

Product images:



WB Suggested Anti-TM7SF2 Antibody Titration:
 0.2-1 ug/ml
 ELISA Titer: 1:312500
 Positive Control: COLO205 cell lysate



Host: Rabbit
 Target Name: TM7SF2
 Sample Type: Human Fetal Heart
 Antibody Dilution: 1.0ug/ml