

## Product datasheet for **TA356541**

### TGF beta 3 (TGFB3) Rabbit Polyclonal Antibody

#### Product data:

Product Type:	Primary Antibodies
Applications:	WB
Reactivity:	Human
Host:	Rabbit
Clonality:	Polyclonal
Immunogen:	The immunogen is a synthetic peptide directed towards the middle region of human TGFB3
Specificity:	<b>Expected reactivity:</b> Cow, Dog, Goat, Guinea Pig, Horse, Human, Mouse, Rabbit, Rat, Sheep, Zebrafish <b>Homology:</b> Cow: 93%; Dog: 100%; Goat: 79%; Guinea Pig: 100%; Horse: 100%; Human: 100%; Mouse: 100%; Rabbit: 100%; Rat: 100%; Sheep: 93%; Zebrafish: 100%
Formulation:	Liquid. Purified antibody supplied in 1x PBS buffer with 0.09% (w/v) sodium azide and 2% sucrose. <i>Note that this product is shipped as lyophilized powder to China customers.</i>
Concentration:	lot specific
Purification:	Affinity Purified
Conjugation:	Unconjugated
Storage:	For short term use, store at 2-8°C up to 1 week. For long term storage, store at -20°C in small aliquots to prevent freeze-thaw cycles.
Stability:	Shelf life: one year from despatch.
Predicted Protein Size:	47kDa
Gene Name:	transforming growth factor beta 3
Database Link:	<a href="#">NP_003230</a> <a href="#">Entrez Gene 7043 Human</a> <a href="#">P10600</a>
Background:	TGFB3 is involved in embryogenesis and cell differentiation.
Synonyms:	ARVD; FLJ16571; TGF-beta-3; TGF-beta3
Protein Families:	Druggable Genome, Secreted Protein, Transmembrane



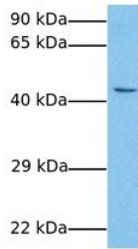
[View online »](#)

**Protein Pathways:**

Cell cycle, Chronic myeloid leukemia, Colorectal cancer, Cytokine-cytokine receptor interaction, Dilated cardiomyopathy, Hypertrophic cardiomyopathy (HCM), MAPK signaling pathway, Pancreatic cancer, Pathways in cancer, Renal cell carcinoma, TGF-beta signaling pathway

**Product images:**

**TGFB3**



Host: Rabbit  
 Target Name: TGFB3  
 Sample Type: MCF7  
 Antibody Dilution: 1ug/ml

Host: Rabbit  
 Target Name: TGFB3  
 Sample Tissue: Human MCF7  
 Antibody Dilution: 1.0ug/ml