

Product datasheet for **TA356540**

TGF beta 2 (TGFB2) Rabbit Polyclonal Antibody

Product data:

Product Type:	Primary Antibodies
Applications:	WB
Reactivity:	Human, Mouse
Host:	Rabbit
Clonality:	Polyclonal
Immunogen:	The immunogen is a synthetic peptide directed towards the middle region of human TGFB2
Specificity:	Expected reactivity: Cow, Dog, Guinea Pig, Horse, Human, Mouse, Pig, Rabbit, Rat, Sheep, Zebrafish Homology: Cow: 100%; Dog: 100%; Guinea Pig: 93%; Horse: 100%; Human: 100%; Mouse: 100%; Pig: 100%; Rabbit: 100%; Rat: 100%; Sheep: 100%; Zebrafish: 93%
Formulation:	Liquid. Purified antibody supplied in 1x PBS buffer with 0.09% (w/v) sodium azide and 2% sucrose. <i>Note that this product is shipped as lyophilized powder to China customers.</i>
Concentration:	lot specific
Purification:	Affinity Purified
Conjugation:	Unconjugated
Storage:	For short term use, store at 2-8°C up to 1 week. For long term storage, store at -20°C in small aliquots to prevent freeze-thaw cycles.
Stability:	Shelf life: one year from despatch.
Predicted Protein Size:	46kDa
Gene Name:	transforming growth factor beta 2
Database Link:	NP_003229 Entrez Gene 21808 Mouse Entrez Gene 7042 Human P61812



[View online »](#)

Background:

This gene encodes a member of the transforming growth factor beta (TGFB) family of cytokines, which are multifunctional peptides that regulate proliferation, differentiation, adhesion, migration, and other functions in many cell types by transducing their signal through combinations of transmembrane type I and type II receptors (TGFB1 and TGFB2) and their downstream effectors, the SMAD proteins. Disruption of the TGFB/SMAD pathway has been implicated in a variety of human cancers. The encoded protein is secreted and has suppressive effects of interleukin-2 dependent T-cell growth. Translocation t(1;7)(q41;p21) between this gene and HDAC9 is associated with Peters' anomaly, a congenital defect of the anterior chamber of the eye. The knockout mice lacking this gene show perinatal mortality and a wide range of developmental, including cardiac, defects. Alternatively spliced transcript variants encoding different isoforms have been identified.

Synonyms:

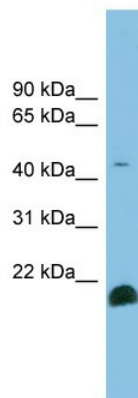
Cetermin; G-TSF; MGC116892; Polyergin; TGF-beta-2; TGF-beta2

Protein Families:

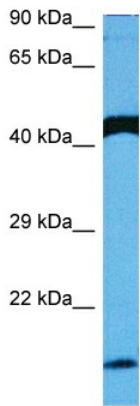
Druggable Genome, Secreted Protein, Transmembrane

Protein Pathways:

Cell cycle, Chronic myeloid leukemia, Colorectal cancer, Cytokine-cytokine receptor interaction, Dilated cardiomyopathy, Hypertrophic cardiomyopathy (HCM), MAPK signaling pathway, Pancreatic cancer, Pathways in cancer, Renal cell carcinoma, TGF-beta signaling pathway

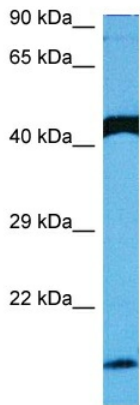
Product images:

WB Suggested Anti-TGFB2 Antibody Titration: 0.2-1 ug/ml
ELISA Titer: 1:312500
Positive Control: NCI-H226 cell lysate
There is BioGPS gene expression data showing that TGFB2 is expressed in NCIH226



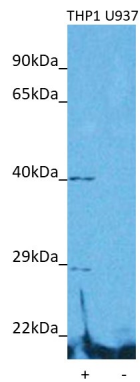
Host: Rabbit
 Target Name: Tgfb2
 Sample Type: Mouse Small Intestine Lysate
 Antibody Dilution: 1.0µg/ml

Host: Rabbit
 Target Name: TGFB2
 Sample Tissue: Mouse Small Intestine
 Antibody Dilution: 1ug/ml



Host: Rabbit
 Target Name: Tgfb2
 Sample Type: Mouse Small Intestine Lysate
 Antibody Dilution: 1.0µg/ml

Host: Mouse
 Target Name: TGFB2
 Sample Tissue: Mouse Small Intestine
 Antibody Dilution: 1ug/ml



Host: Rabbit
 Target name: TGFB2
 Positive control: ~25ug THP1 Cell Lysate (THP1)
 Negative control: ~25ug U937 Cell Lysate (U937)
 Antibody concentration: 3ug/ml

Host: Rabbit
 Target: TGFB2
 Positive control (+): THP-1 (N30)
 Negative control (-): U937 (N31)
 Antibody concentration: 3ug/ml