

Product datasheet for **TA356534**

Tapasin (TAPBP) Rabbit Polyclonal Antibody

Product data:

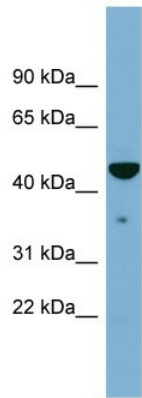
Product Type:	Primary Antibodies
Applications:	WB
Reactivity:	Human
Host:	Rabbit
Clonality:	Polyclonal
Immunogen:	The immunogen is a synthetic peptide directed towards the middle region of human TAPBP
Specificity:	Expected reactivity: Cow, Horse, Human, Mouse, Pig, Rat, Sheep Homology: Cow: 79%; Horse: 93%; Human: 100%; Mouse: 79%; Pig: 86%; Rat: 79%; Sheep: 86%
Formulation:	Liquid. Purified antibody supplied in 1x PBS buffer with 0.09% (w/v) sodium azide and 2% sucrose. <i>Note that this product is shipped as lyophilized powder to China customers.</i>
Concentration:	lot specific
Purification:	Affinity Purified
Conjugation:	Unconjugated
Storage:	For short term use, store at 2-8°C up to 1 week. For long term storage, store at -20°C in small aliquots to prevent freeze-thaw cycles.
Stability:	Shelf life: one year from despatch.
Predicted Protein Size:	48kDa
Gene Name:	TAP binding protein (tapasin)
Database Link:	NP_003181 Entrez Gene 6892 Human O15533
Background:	TAPBP is a transmembrane glycoprotein which mediates interaction between newly assembled major histocompatibility complex (MHC) class I molecules and the transporter associated with antigen processing (TAP), which is required for the transport of antigeni
Synonyms:	NGS17; TAPA; TPN; TPSN
Protein Families:	Druggable Genome, Transmembrane



[View online »](#)

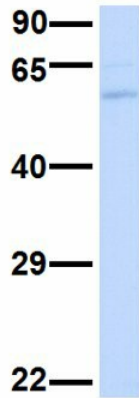
Protein Pathways: Antigen processing and presentation

Product images:



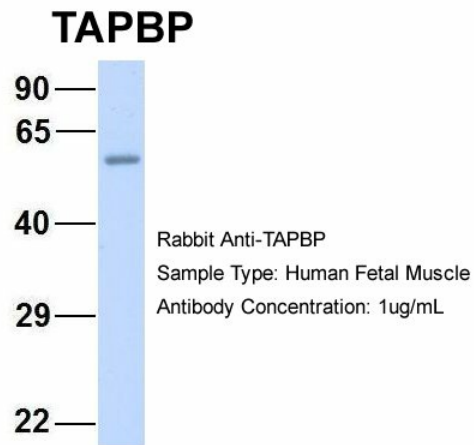
WB Suggested Anti-TAPBP Antibody Titration: 0.2-1 ug/ml
 ELISA Titer: 1:62500
 Positive Control: OVCAR-3 cell lysate
 TAPBP is supported by BioGPS gene expression data to be expressed in OVCAR3

TAPBP

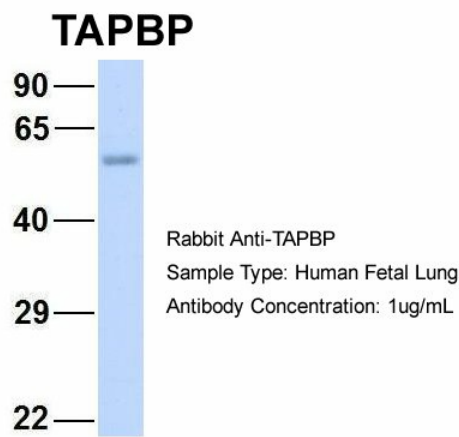


Rabbit Anti-TAPBP
 Sample Type: Human Adult Placenta
 Antibody Concentration: 1ug/mL

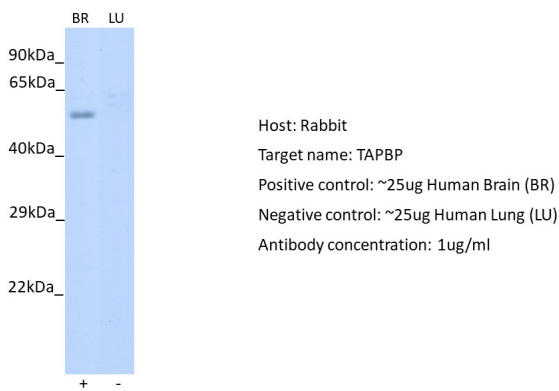
Host: Rabbit
 Target Name: SERPINA3
 Sample Type: Human Adult Placenta
 Antibody Dilution: 1.0ug/ml



Host: Rabbit
Target Name: NOP56
Sample Type: Human Fetal Muscle
Antibody Dilution: 1.0ug/ml



Host: Rabbit
Target Name: NSUN6
Sample Type: Human Fetal Lung
Antibody Dilution: 1.0ug/ml



Host: Rabbit
Target: TAPBP
Positive control (+): Human Lung (LU)
Negative control (-): Human Brain (BR)
Antibody concentration: 1ug/ml