

Product datasheet for TA356527

nSMase (SMPD2) Rabbit Polyclonal Antibody

Product data:

Product Type:	Primary Antibodies
Applications:	WB
Reactivity:	Human
Host:	Rabbit
Clonality:	Polyclonal
Immunogen:	The immunogen is a synthetic peptide directed towards the N terminal region of human SMPD2
Specificity:	Expected reactivity: Cow, Dog, Guinea Pig, Horse, Human, Mouse, Rabbit, Rat Homology: Cow: 79%; Dog: 86%; Guinea Pig: 79%; Horse: 86%; Human: 100%; Mouse: 77%; Rabbit: 79%; Rat: 79%
Formulation:	Liquid. Purified antibody supplied in 1x PBS buffer with 0.09% (w/v) sodium azide and 2% sucrose. <i>Note that this product is shipped as lyophilized powder to China customers.</i>
Concentration:	lot specific
Purification:	Protein A purified
Conjugation:	Unconjugated
Storage:	For short term use, store at 2-8°C up to 1 week. For long term storage, store at -20°C in small aliquots to prevent freeze-thaw cycles.
Stability:	Shelf life: one year from despatch.
Predicted Protein Size:	48kDa
Gene Name:	sphingomyelin phosphodiesterase 2
Database Link:	NP_003071 Entrez Gene 6610 Human O60906
Background:	SMPD2 converts sphingomyelin to ceramide. Hydrolyze 1-acyl-2-lyso-sn-glycero-3-phosphocholine (lyso-PC) and 1-O-alkyl-2-lyso-sn-glycero-3-phosphocholine (lyso-platelet-activating factor). The physiological substrate seems to be Lyso-PAF.
Synonyms:	ISC1; Lyso-PAF-PLC; N-SMase; nSMase; NSMASE1

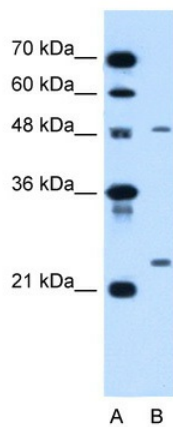


[View online »](#)

Protein Families: Transmembrane

Protein Pathways: Metabolic pathways, Sphingolipid metabolism

Product images:



WB Suggested Anti-SMPD2 Antibody Titration:
1.25ug/ml
Positive Control: HepG2 cell lysate