

Product datasheet for **TA356522**

Ribophorin II (RPN2) Rabbit Polyclonal Antibody

Product data:

Product Type:	Primary Antibodies
Applications:	IHC, WB
Reactivity:	Human
Host:	Rabbit
Clonality:	Polyclonal
Immunogen:	The immunogen is a synthetic peptide directed towards the N terminal region of human RPN2
Specificity:	Expected reactivity: Cow, Dog, Horse, Human, Mouse, Pig, Rabbit, Rat Homology: Cow: 93%; Dog: 100%; Horse: 100%; Human: 100%; Mouse: 100%; Pig: 93%; Rabbit: 100%; Rat: 100%
Formulation:	Liquid. Purified antibody supplied in 1x PBS buffer with 0.09% (w/v) sodium azide and 2% sucrose. <i>Note that this product is shipped as lyophilized powder to China customers.</i>
Concentration:	lot specific
Purification:	Affinity Purified
Conjugation:	Unconjugated
Storage:	For short term use, store at 2-8°C up to 1 week. For long term storage, store at -20°C in small aliquots to prevent freeze-thaw cycles.
Stability:	Shelf life: one year from despatch.
Predicted Protein Size:	69kDa
Gene Name:	ribophorin II
Database Link:	NP_002942 Entrez Gene 6185 Human P04844



[View online »](#)

Background:

RPN2 is a type I integral membrane protein found only in the rough endoplasmic reticulum. The protein is part of an N-oligosaccharyl transferase complex that links high mannose oligosaccharides to asparagine residues found in the Asn-X-Ser/Thr consensus motif of nascent polypeptide chains. This gene encodes a type I integral membrane protein found only in the rough endoplasmic reticulum. The encoded protein is part of an N-oligosaccharyl transferase complex that links high mannose oligosaccharides to asparagine residues found in the Asn-X-Ser/Thr consensus motif of nascent polypeptide chains. This protein is similar in sequence to the yeast oligosaccharyl transferase subunit SWP1.

Synonyms:

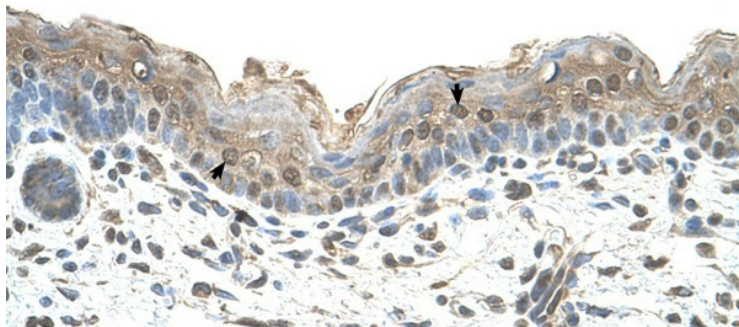
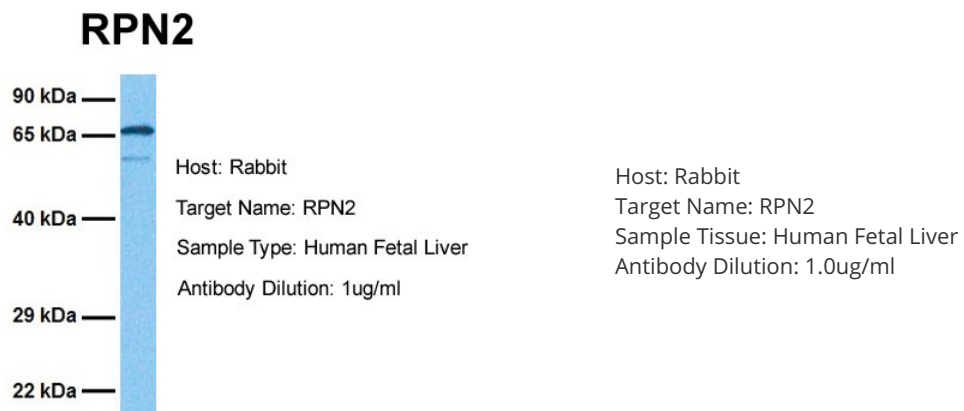
RIBIIR; Ribophorin-2; RPN-II; RPNII; SWP1

Protein Families:

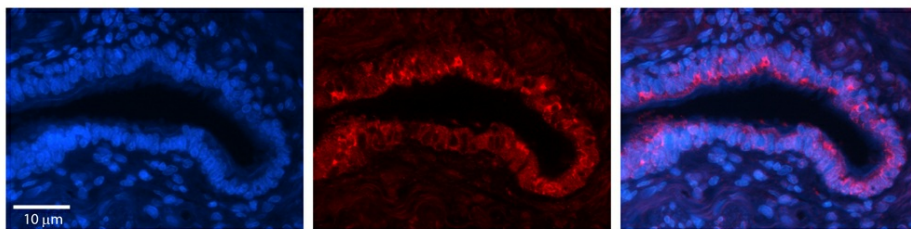
Transmembrane

Protein Pathways:

Metabolic pathways, N-Glycan biosynthesis

Product images:


Human Skin



Rabbit Anti-RPN2 Antibody
Catalog Number: TA356522
Formalin Fixed Paraffin Embedded Tissue:
Human Bronchial Epithelial Tissue
Observed Staining: Cytoplasmic
Primary Antibody Concentration: 1:100
Other Working Concentrations: 1/600
Secondary Antibody: Donkey anti-Rabbit-Cy3
Secondary Antibody Concentration: 1:200
Magnification: 20X
Exposure Time: 0.5–2.0 sec