

Product datasheet for **TA356518**

ROBO2 Rabbit Polyclonal Antibody

Product data:

Product Type:	Primary Antibodies
Applications:	WB
Reactivity:	Human
Host:	Rabbit
Clonality:	Polyclonal
Immunogen:	The immunogen is a synthetic peptide directed towards the N terminal region of human ROBO2
Specificity:	Expected reactivity: Cow, Dog, Guinea Pig, Horse, Human, Mouse, Rabbit, Rat, Zebrafish Homology: Cow: 100%; Dog: 100%; Guinea Pig: 100%; Horse: 100%; Human: 100%; Mouse: 100%; Rabbit: 100%; Rat: 100%; Zebrafish: 77%
Formulation:	Liquid. Purified antibody supplied in 1x PBS buffer with 0.09% (w/v) sodium azide and 2% sucrose. <i>Note that this product is shipped as lyophilized powder to China customers.</i>
Concentration:	lot specific
Purification:	Affinity Purified
Conjugation:	Unconjugated
Storage:	For short term use, store at 2-8°C up to 1 week. For long term storage, store at -20°C in small aliquots to prevent freeze-thaw cycles.
Stability:	Shelf life: one year from despatch.
Predicted Protein Size:	151kDa
Gene Name:	roundabout guidance receptor 2
Database Link:	NP_002933 Entrez Gene 6092 Human Q9HCK4



[View online »](#)

Background:

The protein encoded by this gene belongs to the ROBO family, part of the immunoglobulin superfamily of proteins that are highly conserved from fly to human. The encoded protein is a transmembrane receptor for the slit homolog 2 protein and functions in axon guidance and cell migration. Mutations in this gene are associated with vesicoureteral reflux, characterized by the backward flow of urine from the bladder into the ureters or the kidney. Alternative splicing results in multiple transcript variants.

Synonyms:

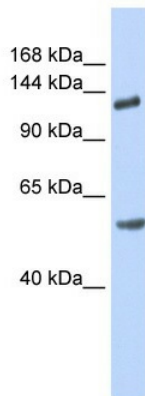
KIAA1568; SAX3

Protein Families:

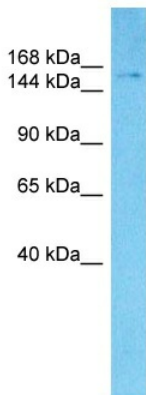
Druggable Genome, Transmembrane

Protein Pathways:

Axon guidance

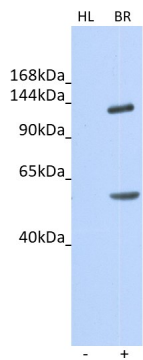
Product images:


WB Suggested Anti-ROBO2 Antibody Titration:
0.2-1 ug/ml
ELISA Titer: 1:1562500
Positive Control: Human brain



Host: Rabbit
Target Name: ROBO2
Sample Type: RPMI 8226 Cell Lysate
Antibody Dilution: 1.0µg/ml

Host: Rabbit
Target Name: ROBO2
Sample Tissue: Human RPMI 8226 Whole Cell
Antibody Dilution: 1 ug/ml



Host: Rabbit
 Target name: ROBO2
 Positive control: ~25ug Human Brain (BR)
 Negative control: ~25ug HeLa Cell Lysate (HL)
 Antibody concentration: 1ug/ml

Host: Rabbit
 Target: ROBO2
 Positive control (+): Human Brain (BR)
 Negative control (-): HeLa Cell Lysate (HL)
 Antibody concentration: 1ug/ml